

GEIGER

TEXTILES

Price List and Specification Guide

EFFECTIVE NOVEMBER 2023

02	Textiles
78	Price Groups
79	Custom Finishes
80	Warranty
81	Additional Information
82	Maintenance Guidelines



GEIGER

TEXTILES

Allusion

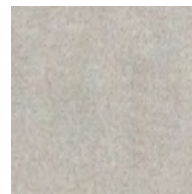
DESIGNED BY BASSAMFELLOWS

APPLICATION	Seating
CONTENT	60% Alpaca, 27% Wool, 13% Nylon
BACKING	Cotton
WIDTH	56"
REPEAT	None
ABRASION	95,000 Cycles, Martindale*
FLAMMABILITY	CA TB 117-2013
WEIGHT	25.2 Oz Per Linear Yard
ORIGIN	Italy
ENVIRONMENTAL	SCS Indoor Advantage™ Gold Contains Bio-Based Materials FR Chemical Free Prop 65 Chemical Free REACH Compliant Healthier Hospitals Compliant Living Future Red List Compliant WELL Building Standard Compliant
MAINTENANCE	S – Clean with Mild, Dry Cleaning Solvent
CUSTOM FINISHES	Alta™ Plush
PRICE GROUP	8
NET PRICE	\$72 Per Yard

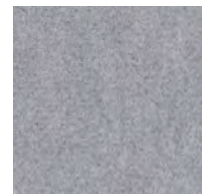
*Abrasion test results exceeding ACT Performance Guidelines are not an indicator of product lifespan. Multiple factors affect fabric durability and appearance retention.



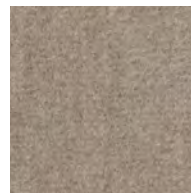
1GS01 Moonlight



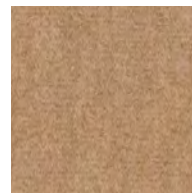
1GS02 Pearl Gray



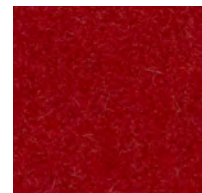
1GS03 Platinum



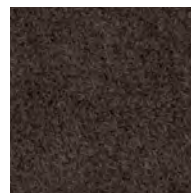
1GS04 Smoky Taupe



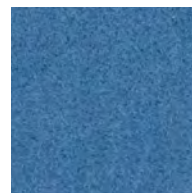
1GS05 Camel



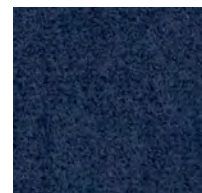
1GS06 Swiss Red



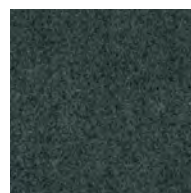
1GS07 Chestnut Brown



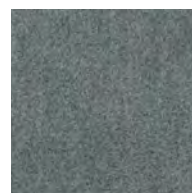
1GS08 Deep Cerulean



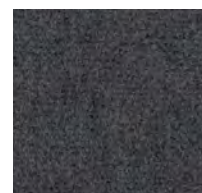
1GS09 Navy



1GS10 Black Green



1GS11 Sterling



1GS12 Anthracite

Indicates textile with limited on-hand availability. Please call your sales or customer service representative for current stock levels and ordering options.

GEIGER

TEXTILES

Alpaca Mohair

DESIGNED BY SUSAN LYONS

APPLICATION	Seating
CONTENT	100% Alpaca
BACKING	Cotton/Polyester
WIDTH	54"
REPEAT	None
ABRASION	40,000 Cycles, Martindale
FLAMMABILITY	CA TB 117-2013
WEIGHT	29.7 Oz Per Linear Yard
ORIGIN	Belgium
ENVIRONMENTAL	SCS Indoor Advantage™ Gold Contains Bio-Based Materials FR Chemical Free Prop 65 Chemical Free Healthier Hospitals Compliant Living Future Red List Compliant WELL Building Standard Compliant
MAINTENANCE	S – Clean with Mild, Dry Cleaning Solvent
CUSTOM FINISHES	Alta™ Plush; PFOA-Free Stain Resistant Finish
PRICE GROUP	9
NET PRICE	\$165 Per Yard



18510 Dune



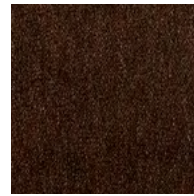
18511 Trench



18512 Vicuna



18570 Sepia



18571 Umber



18580 Fog



18581 Flannel



18582 Charcoal

GEIGER

TEXTILES

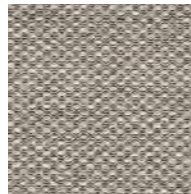
Amenia

DESIGNED BY JOSEPH WHITE

APPLICATION	Seating
CONTENT	67% Wool, 23% Nylon, 10% Post-Consumer Recycled Polyester
FINISH	PFOA-Free Stain Resistant
BACKING	Acrylic
WIDTH	53"
REPEAT	None
ABRASION	100,000 Double Rubs, Wyzenbeek*
FLAMMABILITY	CA TB 117-2013
WEIGHT	21.3 Oz Per Linear Yard
ORIGIN	United States
ENVIRONMENTAL	SCS Indoor Advantage™ Gold Contains Bio-Based Materials Contains Recycled Content FR Chemical Free Prop 65 Chemical Free
MAINTENANCE	S – Clean with Mild, Dry Cleaning Solvent
CUSTOM FINISHES	Alta; Alta Food & Beverage; Nanotex; Nanotex with Impermeable Barrier
PRICE GROUP	7
NET PRICE	\$54 Per Yard

NOTE Irregular variations in color are inherent to this material

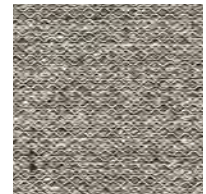
*Abrasion test results exceeding ACT Performance Guidelines are not an indicator of product lifespan. Multiple factors affect fabric durability and appearance retention.



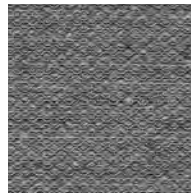
1GX01 Fog



1GX02 Dark Sand



1GX03 Steel



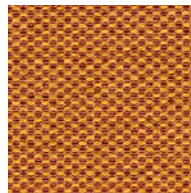
1GX04 Pewter



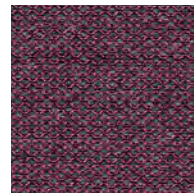
1GX05 Persimmon



1GX06 Sunflower



1GX07 Bittersweet



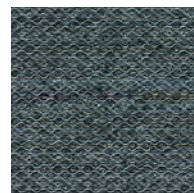
1GX08 Magenta



1GX09 Willow



1GX10 Forest



1GX11 Gray Blue

Indicates textile with limited on-hand availability. Please call your sales or customer service representative for current stock levels and ordering options.

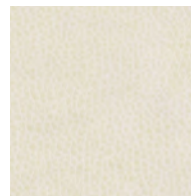
GEIGER

TEXTILES

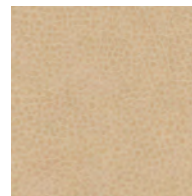
Antico

APPLICATION	Seating
CONTENT	100% Polyurethane
FINISH	Ink and Stain Resistant
BACKING	Polyester/Cotton
WIDTH	54"
REPEAT	None
ABRASION	100,000 Double Rubs, Wyzenbeek*
FLAMMABILITY	CA TB 117-2013
WEIGHT	19.5 Oz Per Linear Yard
ORIGIN	China
ENVIRONMENTAL	SCS Indoor Advantage™ Gold FR Chemical Free Heavy Metal Free Prop 65 Chemical Free REACH Compliant Healthier Hospitals Compliant Living Future Red List Compliant WELL Building Standard Compliant
MAINTENANCE	W – Clean with Water-Based Cleanser; Bleach Cleanable – Clean with 10:1 Water to Household Bleach
PRICE GROUP	4
NET PRICE	\$36 Per Yard
NOTE	Bleach Cleanable

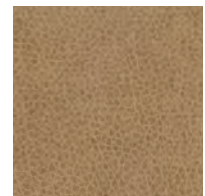
*Abrasion test results exceeding
ACT Performance Guidelines are not
an indicator of product lifespan.
Multiple factors affect fabric durability
and appearance retention.



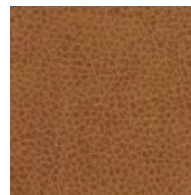
1GM01 Cream



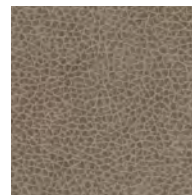
1GM02 Bone



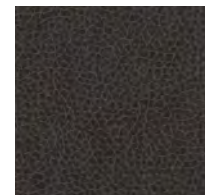
1GM03
Raw Sienna



1GM04 Desert



1GM05 Ash Gray



1GM08 Dark Shale

Indicates textile with limited on-hand availability. Please call your sales or customer service representative for current stock levels and ordering options.

GEIGER

TEXTILES

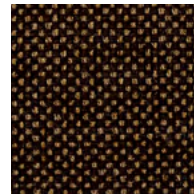
Basketweave

DESIGNED BY SUSAN LYONS

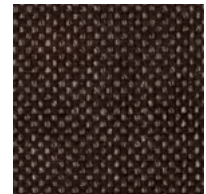
APPLICATION	Seating
CONTENT	60% Cotton, 40% Wool
WIDTH	53"
REPEAT	None
ABRASION	35,000 Cycles, Martindale
FLAMMABILITY	CA TB 117-2013
WEIGHT	31.8 Oz Per Linear Yard
ORIGIN	Austria
ENVIRONMENTAL	SCS Indoor Advantage™ Gold Contains Bio-Based Materials FR Chemical Free Prop 65 Chemical Free Healthier Hospitals Compliant Living Future Red List Compliant WELL Building Standard Compliant
MAINTENANCE	S – Clean with Mild, Dry Cleaning Solvent
CUSTOM FINISHES	Acrylic Backing/PFOA-Free Stain Resistant Finish; Alta; Alta Food & Beverage; Alta Workplace; Nanotex; Nanotex with Impermeable Barrier; PFOA-Free Stain Resistant Finish
PRICE GROUP	8
NET PRICE	\$56 Per Yard



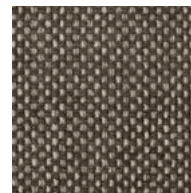
18710 Dune



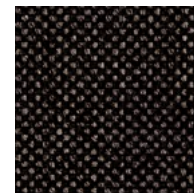
18711 Saddle



18770 Umber



18780 Stone



18781 Charcoal

Indicates textile with limited on-hand availability. Please call your sales or customer service representative for current stock levels and ordering options.

GEIGER

TEXTILES

Bellano

DESIGNED BY BASSAMFELLOWS

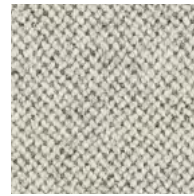
APPLICATION	Seating, Geiger Tackboards, Upholstered Walls†
CONTENT	75% Wool, 10% Linen, 8% Nylon, 7% Alpaca
WIDTH	55"
REPEAT	None
ABRASION	40,000 Cycles, Martindale
FLAMMABILITY	CA TB 117-2013; ASTM E84 Unadhered, Class A**
WEIGHT	21.44 Oz Per Linear Yard
ORIGIN	Italy
ENVIRONMENTAL	SCS Indoor Advantage™ Gold Contains Bio-Based Materials FR Chemical Free Prop 65 Chemical Free REACH Compliant Healthier Hospitals Compliant Living Future Red List Compliant WELL Building Standard Compliant
MAINTENANCE	S – Clean with Mild, Dry Cleaning Solvent
CUSTOM FINISHES	Acrylic Backing/PFOA-Free Stain Resistant Finish; Alta; Alta Food & Beverage; Alta Workplace; Nanotex; Nanotex with Impermeable Barrier; PFOA-Free Stain Resistant Finish; Fire Retardant (FR) Finish for Upholstered Wall Panel Use
PRICE GROUP	7
NET PRICE	\$82 Per Yard

NOTE †For upholstered wall application, due to fiber content, puddling and sagging can occur if the installation is not 24/7 climate controlled.

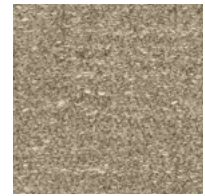
**Passes ASTM E84, Unadhered Class A for Upholstered Wall application with use of Fire Retardant (FR) Finish for Upholstered Wall Panel, available for upcharge.



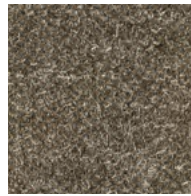
1AX01 Pearl



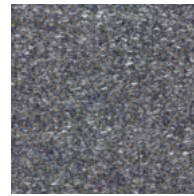
1AX02 Fog



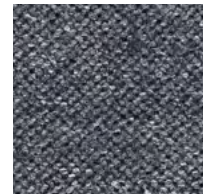
1AX03 Fawn



1AX04 Pumice



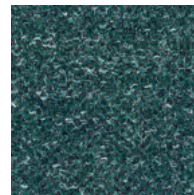
1AX05 Pewter



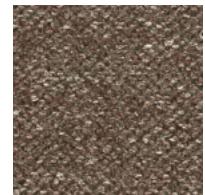
1AX06 Atlantic



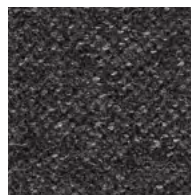
1AX07 Black Green



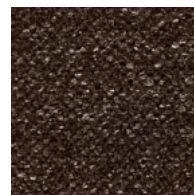
1AX08 Adriatic



1AX09 Coffee



1AX10 Charcoal



1AX11 Umber



1AX12 Magenta



1AX13 Bittersweet



1AX14 Sunflower

GEIGER

TEXTILES

Bouclé

DESIGNED BY SUSAN LYONS

APPLICATION	Seating
CONTENT	100% Post-Consumer Recycled Polyester
FINISH	GreenShield
WIDTH	54"
REPEAT	None
ABRASION	100,000 Double Rubs, Wyzenbeek*
FLAMMABILITY	CA TB 117-2013
WEIGHT	27 Oz Per Linear Yard
ORIGIN	Canada
ENVIRONMENTAL	SCS Indoor Advantage™ Gold Contains Recycled Content FR Chemical Free Prop 65 Chemical Free REACH Compliant
MAINTENANCE	W/S – Clean with Water-Based Cleanser, or Mild, Dry Cleaning Solvent
CUSTOM FINISHES	Acrylic Backing/PFOA-Free Stain Resistant Finish; Alta; Alta Food & Beverage; Alta Workplace; Nanotex; Nanotex with Impermeable Barrier
PRICE GROUP	5
NET PRICE	\$42 Per Yard

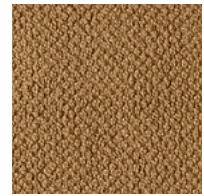
*Abrasion test results exceeding
ACT Performance Guidelines are not
an indicator of product lifespan.
Multiple factors affect fabric durability
and appearance retention.



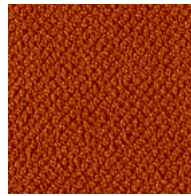
1GA10 Cream



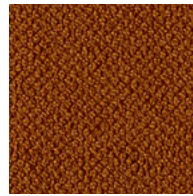
1GA11 Dune



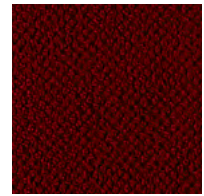
1GA12 Camel



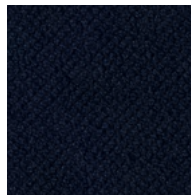
1GA20 Luggage



1GA21 Copper



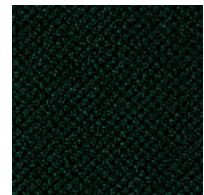
1GA30 Wine



1GA50 Navy



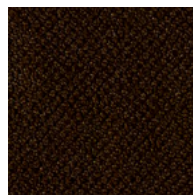
1GA60 Willow



1GA61 Fir



1GA70 Umber



1GA71 Java



1GA80 Stone



1GA81 Graphite



1GA82 Black

Indicates textile with limited on-hand availability. Please call your sales or
customer service representative for current stock levels and ordering options.

GEIGER

TEXTILES

Braid

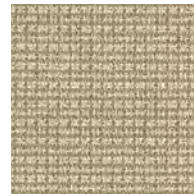
DESIGNED BY BASSAMFELLOWS

APPLICATION	Seating, Geiger Tackboards, Upholstered Walls
CONTENT	100% Polyester
FINISH	PFOA-Free Stain Resistant
BACKING	Acrylic
WIDTH	56"
REPEAT	⅜" V
ABRASION	100,000 Double Rubs, Wyzenbeek*
FLAMMABILITY	CA TB 117-2013; ASTM E84 Unadhered, Class A
WEIGHT	24.6 Oz Per Linear Yard
ORIGIN	United States
ENVIRONMENTAL	SCS Indoor Advantage™ Gold FR Chemical Free Prop 65 Chemical Free
MAINTENANCE	W/S – Clean with Water-Based Cleanser, or Mild, Dry Cleaning Solvent; Bleach Cleanable – Clean with 10:1 Water to Household Bleach
CUSTOM FINISHES	Alta; Alta Food & Beverage; Antimicrobial Stain Resistant Finish with Impermeable Barrier; Nanotex; Nanotex with Impermeable Barrier
PRICE GROUP	4
NET PRICE	\$32 Per Yard
NOTE	Bleach Cleanable

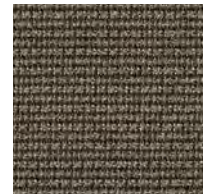
*Abrasion test results exceeding ACT Performance Guidelines are not an indicator of product lifespan. Multiple factors affect fabric durability and appearance retention.



1AG01 Pearl



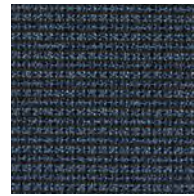
1AG02 Dark Sand



1AG03 City Night



1AG04 Shadow



1AG05 Midnight Blue

Indicates textile with limited on-hand availability. Please call your sales or customer service representative for current stock levels and ordering options.

GEIGER

TEXTILES

Bristol Leather

APPLICATION	Seating
CONTENT	European Full Grain Semi-Aniline Dyed Cowhide
TANNING	Chrome-Free, Synthetic Vegetable
FINISH	Breathable Water-Based Protective Topcoat
AVERAGE HIDE	50-55 Square Feet
FLAMMABILITY	CA TB 117-2013
WEIGHT	2.75 Oz Per Square Foot
THICKNESS	1.1 mm +/- .1 mm
ORIGIN	Austria
ENVIRONMENTAL	SCS Indoor Advantage™ Gold FR Chemical Free Heavy Metal Free Prop 65 Chemical Free OEKO-TEX® Certified REACH Compliant Healthier Hospitals Compliant Living Future Red List Compliant WELL Building Standard Compliant
PRICE GROUP	10
NET PRICE	\$10 Per Square Foot



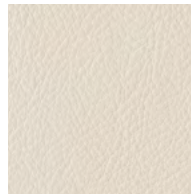
5-507 Black



5-511 Putty



5-519 Hunter



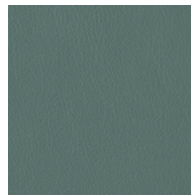
5-520 White



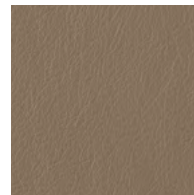
5-521 Ivory



5-522 Parchment



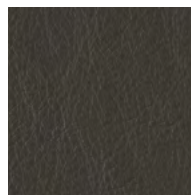
5-537 Caribbean



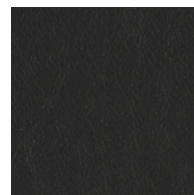
5-546 Pumice



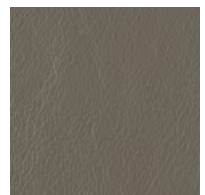
5-547 Smoke



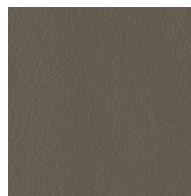
5-548 Charcoal



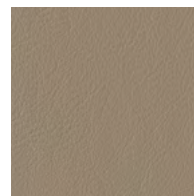
5-549 Dark Shale



5-556 Downtown
Grey



5-557 City Night



5-559 Ash Gray



5-563 Champagne

Bristol Leather



5-564 Chestnut
Brown



5-565 Dark Sienna



5-566 Earthen



5-567 Desert



5-568 British Green



5-579 Paris Blue



5-583 Atlantic



5-592 Camel



5-594 Taupe



5-597 Pure



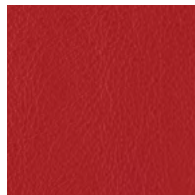
5-598 Cream



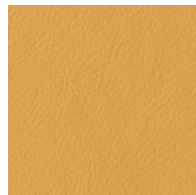
5-600 Midnight
Blue



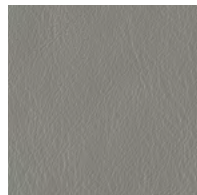
5-603 Sangria



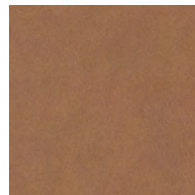
5-604 Swiss Red



5-605 Nordic Yellow



5-606 Sky Gray



5-608 Natural

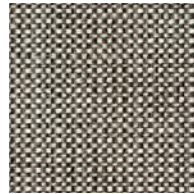
GEIGER

TEXTILES

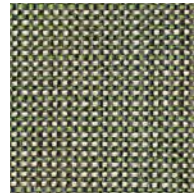
Button-Up

DESIGNED BY BASSAMFELLOWS

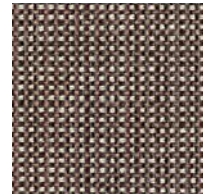
APPLICATION	Seating
CONTENT	58% Post-Industrial Recycled Cotton, 18% Rayon, 15% Polyester, 9% Acrylic
FINISH	PFOA-Free Stain Resistant
BACKING	Acrylic
WIDTH	54"
REPEAT	67/8" H; Suitable for Non-Match
ABRASION	100,000 Double Rubs, Wyzenbeek*
FLAMMABILITY	CA TB 117-2013
WEIGHT	21.6 Oz Per Linear Yard
ORIGIN	United States
ENVIRONMENTAL	SCS Indoor Advantage™ Gold Contains Bio-Based Materials Contains Recycled Content FR Chemical Free Prop 65 Chemical Free
MAINTENANCE	S – Clean with Mild, Dry Cleaning Solvent
CUSTOM FINISHES	Alta; Alta Food & Beverage; Nanotex; Nanotex with Impermeable Barrier
PRICE GROUP	5
NET PRICE	\$30 per yard



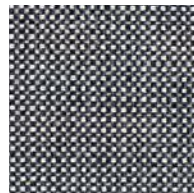
1AQ04 Prairie



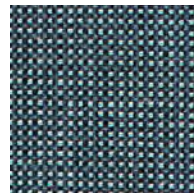
1AQ05 Tourmaline



1AQ06 Shadow



1AQ07 Cool Navy



1AQ08 Poolside



1AQ09 Lake

*Abrasion test results exceeding
ACT Performance Guidelines are not
an indicator of product lifespan.
Multiple factors affect fabric durability
and appearance retention.



Indicates textile with limited on-hand availability. Please call your sales or customer service representative for current stock levels and ordering options.

GEIGER

TEXTILES

Cambrai

DESIGNED BY BASSAMFELLOWS

APPLICATION	Seating, Geiger Tackboards, Upholstered Walls
CONTENT	100% Polyester
FINISH	Antimicrobial Stain Resistant
BACKING	Acrylic
WIDTH	54"
REPEAT	None
ABRASION	100,000 Double Rubs, Wyzenbeek*
FLAMMABILITY	CA TB 117-2013; ASTM E84 Unadhered, Class A
WEIGHT	24.3 Oz Per Linear Yard
ORIGIN	China
ENVIRONMENTAL	SCS Indoor Advantage™ Gold FR Chemical Free Prop 65 Chemical Free REACH Compliant
MAINTENANCE	W – Clean with Water-Based Cleanser
CUSTOM FINISHES	Alta; Alta Food & Beverage; Nanotex; Nanotex with Impermeable Barrier
PRICE GROUP	3
NET PRICE	\$26 Per Yard

*Abrasion test results exceeding
ACT Performance Guidelines are not
an indicator of product lifespan.
Multiple factors affect fabric durability
and appearance retention.



21602 Khaki



21603 Hemp



21605 Lavarock



21606 Carbon



21607 Ink

Indicates textile with limited on-hand availability. Please call your sales or
customer service representative for current stock levels and ordering options.

GEIGER

TEXTILES

Canon

DESIGNED BY BASSAMFELLOWS

APPLICATION	Seating, Geiger Tackboards, Upholstered Walls
CONTENT	100% Polyester
FINISH	PFOA-Free Stain Resistant
BACKING	Acrylic
WIDTH	55"
REPEAT	¼" V
ABRASION	100,000 Double Rubs, Wyzenbeek*
FLAMMABILITY	CA TB 117-2013; ASTM E84 Unadhered, Class A
WEIGHT	12.14 Oz Per Linear Yard
ORIGIN	United States
ENVIRONMENTAL	SCS Indoor Advantage™ Gold FR Chemical Free Prop 65 Chemical Free
MAINTENANCE	W/S – Clean with Water-Based Cleanser, or Mild, Dry Cleaning Solvent; Bleach Cleanable – Clean with 10:1 Water to Household Bleach
CUSTOM FINISHES	Alta; Alta Food & Beverage; Nanotex; Nanotex with Impermeable Barrier
PRICE GROUP	2
NET PRICE	\$20 Per Yard
NOTE	Bleach Cleanable

*Abrasion test results exceeding ACT Performance Guidelines are not an indicator of product lifespan. Multiple factors affect fabric durability and appearance retention.



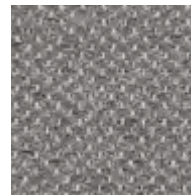
1DB01 Pearl Gray



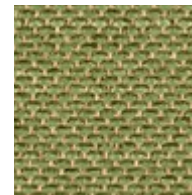
1DB02 Dune



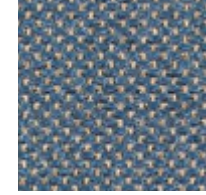
1DB03 Flax



1DB05 Pewter



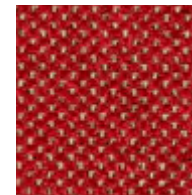
1DB06 Tourmaline



1DB07 Adriatic



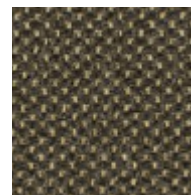
1DB08 Red Hot



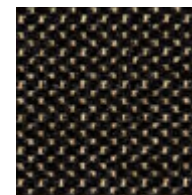
1DB09 Swiss Red



1DB10 Steel



1DB11 Umber



1DB12 Black

Indicates textile with limited on-hand availability. Please call your sales or customer service representative for current stock levels and ordering options.

GEIGER

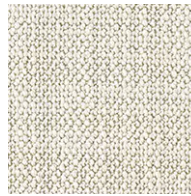
TEXTILES

Capri

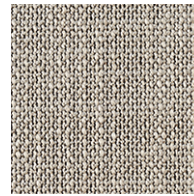
DESIGNED BY BASSAMFELLOWS

APPLICATION	Seating
CONTENT	36% Cotton, 32% Acrylic, 24% Rayon, 8% Polyester
FINISH	PFOA-Free Stain Resistant
BACKING	Acrylic
WIDTH	55"
REPEAT	None
ABRASION	80,000 Cycles, Martindale*
FLAMMABILITY	CA TB 117-2013
WEIGHT	27 Oz Per Linear Yard
ORIGIN	Italy
ENVIRONMENTAL	SCS Indoor Advantage™ Gold Contains Bio-Based Materials FR Chemical Free Prop 65 Chemical Free REACH Compliant
MAINTENANCE	S – Clean with Mild, Dry Cleaning Solvent
CUSTOM FINISHES	Alta; Alta Food & Beverage; Nanotex; Nanotex with Impermeable Barrier
PRICE GROUP	7
NET PRICE	\$80 Per Yard

*Abrasion test results exceeding
ACT Performance Guidelines are not
an indicator of product lifespan.
Multiple factors affect fabric durability
and appearance retention.



17201 Snow



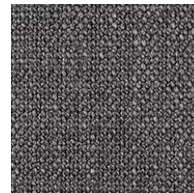
17202 Stone



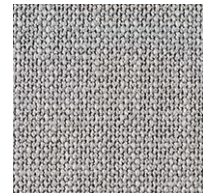
17203 Trench



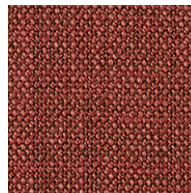
17204 Graphite



17205 Anthracite



17206 Light Silver



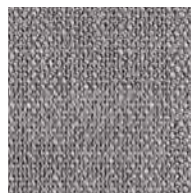
17207 Russet



17208 Chestnut
Brown



17209 Sand



17210 Sterling



17211 Cobalt



17212 Ink

GEIGER

TEXTILES

Cheswick

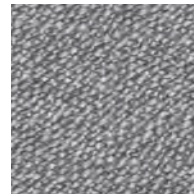
DESIGNED BY BASSAMFELLOWS

APPLICATION	Seating, Geiger Tackboards
CONTENT	55% Acrylic, 45% Polyester
WIDTH	55"
REPEAT	None
ABRASION	100,000 Double Rubs, Wyzenbeek*
FLAMMABILITY	CA TB 117-2013
WEIGHT	23 Oz Per Linear Yard
ORIGIN	Germany
ENVIRONMENTAL	SCS Indoor Advantage™ Gold FR Chemical Free Prop 65 Chemical Free OEKO-TEX® Certified Yarns REACH Compliant Healthier Hospitals Compliant Living Future Red List Compliant WELL Building Standard Compliant
MAINTENANCE	W/S – Clean with Water-Based Cleanser, or Mild, Dry Cleaning Solvent; Bleach Cleanable – Clean with 10:1 Water to Household Bleach
CUSTOM FINISHES	Alta; Alta Food & Beverage; Alta Workplace; Nanotex; Nanotex; Nanotex with Impermeable Barrier; PFOA-Free Stain Resistant Finish
PRICE GROUP	5
NET PRICE	\$38 Per Yard
NOTE	Bleach Cleanable

*Abrasion test results exceeding
ACT Performance Guidelines are not
an indicator of product lifespan.
Multiple factors affect fabric durability
and appearance retention.



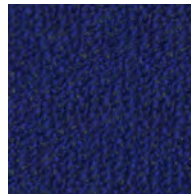
1DD01 Blanc



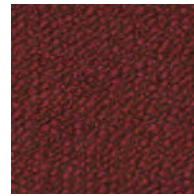
1DD02 Sterling



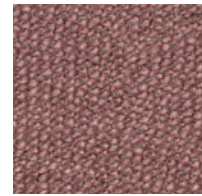
1DD03 Charcoal



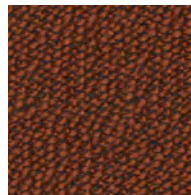
1DD04 Royal



1DD05 Garnet



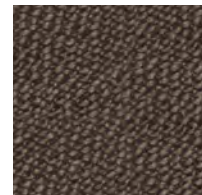
1DD06 Rosa



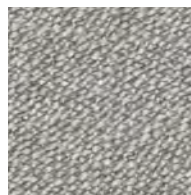
1DD07 Copper



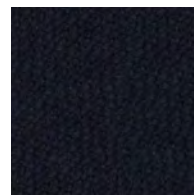
1DD08 Sand Dune



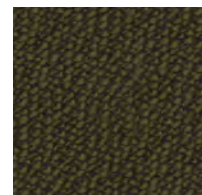
1DD09 Coffee



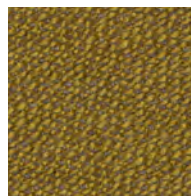
1DD10 Silver Ore



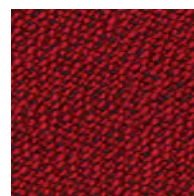
1DD11 Ink



1DD12 Pine



1DD13 Ginger



1DD15 Red

Indicates textile with limited on-hand availability. Please call your sales or customer service representative for current stock levels and ordering options.

GEIGER

TEXTILES

Claremont

DESIGNED BY JOSEPH WHITE

APPLICATION	Seating
CONTENT	67% Post-Industrial Recycled Cotton, 31% Post-Industrial Recycled Polyester, 2% Nylon
FINISH	PFOA-Free Stain Resistant
BACKING	Acrylic
WIDTH	56"
REPEAT	¼" V
ABRASION	75,000 Double Rubs, Wyzenbeek*
FLAMMABILITY	CA TB 117-2013
WEIGHT	26.8 Oz Per Linear Yard
ORIGIN	United States
ENVIRONMENTAL	SCS Indoor Advantage™ Gold Contains Bio-Based Materials Contains Recycled Content FR Chemical Free Prop 65 Chemical Free
MAINTENANCE	S – Clean with Mild, Dry Cleaning Solvent
CUSTOM FINISHES	Alta; Alta Food & Beverage; Nanotex; Nanotex with Impermeable Barrier
PRICE GROUP	5
NET PRICE	\$44 Per Yard

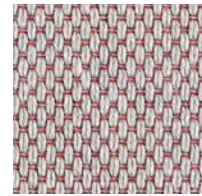
*Abrasion test results exceeding
ACT Performance Guidelines are not
an indicator of product lifespan.
Multiple factors affect fabric durability
and appearance retention.



1GV01 Cotton



1GV02 Fog



1GV03 Haze



1GV04 Gray Quartz



1GV05 Coffee



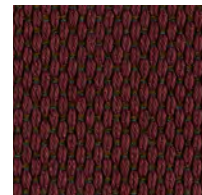
1GV06 Jade



1GV07 Gray Violet



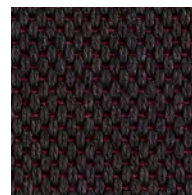
1GV08 Goldenrod



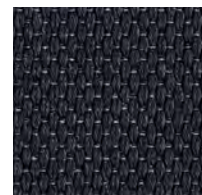
1GV09 Wine



1GV10 Adriatic



1GV11 Charcoal



1GV12 Dark Denim

Indicates textile with limited on-hand availability. Please call your sales or customer service representative for current stock levels and ordering options.

GEIGER

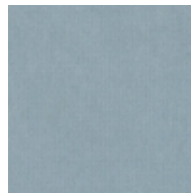
TEXTILES

Classic Velvet

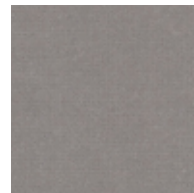
DESIGNED BY BASSAMFELLOWS

APPLICATION	Seating
CONTENT	100% Polyester
BACKING	Polyester/Cotton
WIDTH	55"
REPEAT	None
ABRASION	70,000 Cycles, Martindale*
FLAMMABILITY	CA TB 117-2013
WEIGHT	24.9 Oz Per Linear Yard
ORIGIN	Italy
ENVIRONMENTAL	SCS Indoor Advantage™ Gold FR Chemical Free Prop 65 Chemical Free Healthier Hospitals Compliant Living Future Red List Compliant WELL Building Standard Compliant
MAINTENANCE	W/S – Clean with Water-Based Cleanser, or Mild, Dry Cleaning Solvent
CUSTOM FINISHES	Alta™ Plush; PFOA-Free Stain Resistant
PRICE GROUP	6
NET PRICE	\$48 Per Yard
NOTE	To ensure longevity of velvet textiles, a 100% cotton liner is recommended to prevent wear to the backside of the textile. Areas exposed to greatest wear should be padded with foam beneath this liner.

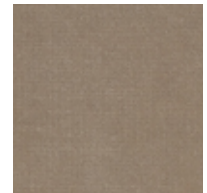
*Abrasion test results exceeding
ACT Performance Guidelines are not
an indicator of product lifespan.
Multiple factors affect fabric durability
and appearance retention.



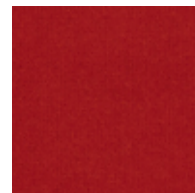
16502 Ice Blue



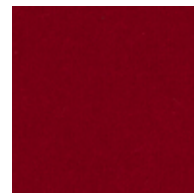
16503 Platinum



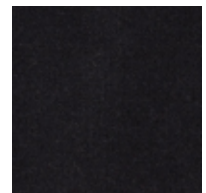
16504 Smoky Taupe



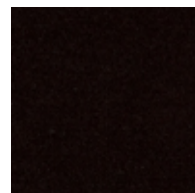
16505 Blaze



16506 Majestic Red



16508 Obsidian



16509 Truffle

Indicates textile with limited on-hand availability. Please call your sales or customer service representative for current stock levels and ordering options.

GEIGER

TEXTILES

Corded Stripe

DESIGNED BY BASSAMFELLOWS

APPLICATION	Seating
CONTENT	100% Cotton
BACKING	Polyester/Cotton
WIDTH	54"
REPEAT	2¾" H
ABRASION	90,000 Double Rubs, Wyzenbeek*
FLAMMABILITY	CA TB 117-2013
WEIGHT	33.3 Oz Per Linear Yard
ORIGIN	United States
ENVIRONMENTAL	SCS Indoor Advantage™ Gold Contains Bio-Based Materials FR Chemical Free Prop 65 Chemical Free Healthier Hospitals Compliant Living Future Red List Compliant WELL Building Standard Compliant
MAINTENANCE	S – Clean with Mild, Dry Cleaning Solvent
CUSTOM FINISHES	Acrylic Backing/PFOA-Free Stain Resistant Finish; Alta; Alta Food & Beverage; Alta Workplace; Nanotex; PFOA-Free Stain Resistant Finish
PRICE GROUP	9
NET PRICE	\$88 Per Yard

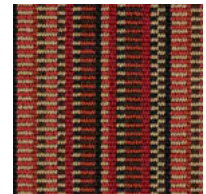
*Abrasion test results exceeding ACT Performance Guidelines are not an indicator of product lifespan. Multiple factors affect fabric durability and appearance retention.



22301 Federal Taupe



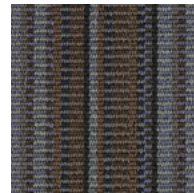
22302 Cool Navy



22303 Swiss Red



22304 Deep Sea



22305 Blue Brown



22306 Red Madder

Indicates textile with limited on-hand availability. Please call your sales or customer service representative for current stock levels and ordering options.

GEIGER

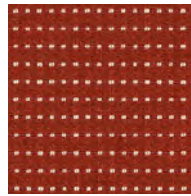
TEXTILES

Dapper

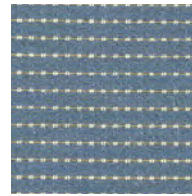
DESIGNED BY BASSAMFELLOWS

APPLICATION	Seating, Geiger Tackboards
CONTENT	55% Post-Consumer Recycled Polyester, 28% Nylon, 17% Rayon
FINISH	PFOA-Free Stain Resistant
BACKING	Acrylic
WIDTH	54"
REPEAT	¼" V
ABRASION	80,000 Double Rubs, Wyzenbeek*
FLAMMABILITY	CA TB 117-2013
WEIGHT	15.9 Oz Per Linear Yard
ORIGIN	United States
ENVIRONMENTAL	SCS Indoor Advantage™ Gold Contains Recycled Content FR Chemical Free Prop 65 Chemical Free
MAINTENANCE	S – Clean with Mild, Dry Cleaning Solvent
CUSTOM FINISHES	Alta; Alta Food & Beverage; Antimicrobial Stain Resistant Finish with Impermeable Barrier; Nanotex; Nanotex with Impermeable Barrier; PFOA-Free Stain Resistant Finish
PRICE GROUP	5
NET PRICE	\$34 Per Yard

*Abrasion test results exceeding
ACT Performance Guidelines are not
an indicator of product lifespan.
Multiple factors affect fabric durability
and appearance retention.



1AD01 Brick



1AD02 Pale Slate
Blue



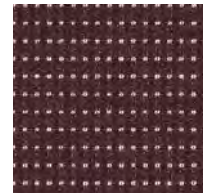
1AD03 Vessel



1AD04 Coffee



1AD05 Mountainside



1AD06 Cerise



1AD07 Dark Night

Indicates textile with limited on-hand availability. Please call your sales or
customer service representative for current stock levels and ordering options.

GEIGER

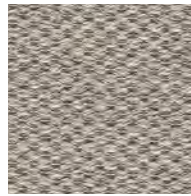
TEXTILES

Dorset

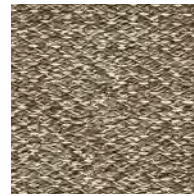
DESIGNED BY JOSEPH WHITE

APPLICATION	Seating
CONTENT	73% Wool, 18% Nylon, 9% Post-Consumer Recycled Polyester
FINISH	PFOA-Free Stain Resistant
BACKING	Acrylic
WIDTH	52"
REPEAT	None
ABRASION	100,000 Double Rubs, Wyzenbeek*
FLAMMABILITY	CA TB 117-2013
WEIGHT	23.4 Oz Per Linear Yard
ORIGIN	United States
ENVIRONMENTAL	SCS Indoor Advantage™ Gold Contains Bio-Based Materials Contains Recycled Content FR Chemical Free Prop 65 Chemical Free
MAINTENANCE	S – Clean with Mild, Dry Cleaning Solvent
CUSTOM FINISHES	Alta; Alta Food & Beverage; Nanotex; Nanotex with Impermeable Barrier
PRICE GROUP	7
NET PRICE	\$60 Per Yard
NOTE	Irregular variations in color are inherent to this material

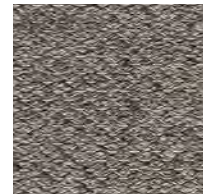
*Abrasion test results exceeding ACT Performance Guidelines are not an indicator of product lifespan. Multiple factors affect fabric durability and appearance retention.



1GW01 Fog



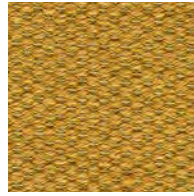
1GW02 Dark Sand



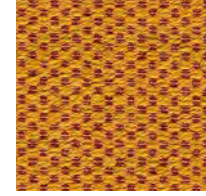
1GW03 Steel



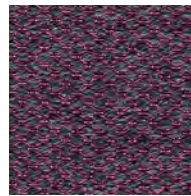
1GW04 Pewter



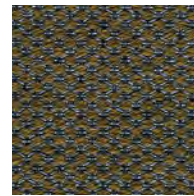
1GW06 Sunflower



1GW07 Bittersweet



1GW08 Magenta



1GW09 Willow



1GW10 Forest



1GW11 Gray Blue

Indicates textile with limited on-hand availability. Please call your sales or customer service representative for current stock levels and ordering options.

GEIGER

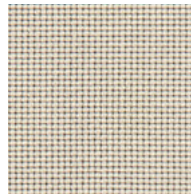
TEXTILES

Double Beam Redux

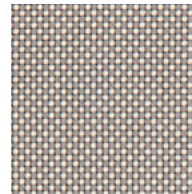
ORIGINALLY DESIGNED BY SUSAN LYONS

DESIGN UPDATED BY BASSAMFELLOWS

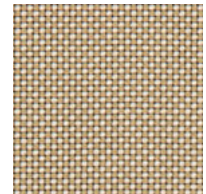
APPLICATION	Seating, Geiger Tackboards
CONTENT	52% Rayon, 45% Post-Consumer Recycled Polyester, 3% Nylon
FINISH	PFOA-Free Stain Resistant
BACKING	Acrylic
WIDTH	52"
REPEAT	None
ABRASION	100,000 Double Rubs, Wyzenbeek*
FLAMMABILITY	CA TB 117-2013
WEIGHT	26.35 Oz Per Linear Yard
ORIGIN	United States
ENVIRONMENTAL	SCS Indoor Advantage™ Gold Contains Recycled Content FR Chemical Free Prop 65 Chemical Free
MAINTENANCE	S – Clean with Mild, Dry Cleaning Solvent
CUSTOM FINISHES	Alta; Alta Food & Beverage; Nanotex; Nanotex with Impermeable Barrier
PRICE GROUP	7
NET PRICE	\$56 Per Yard



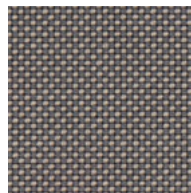
22001 Oyster



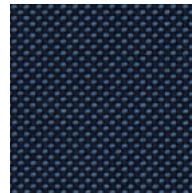
22002 Mortar



22003 Pale Goldenrod



22004 Pewter



22006 Dark Denim



22007 Cocoa

*Abrasion test results exceeding ACT Performance Guidelines are not an indicator of product lifespan. Multiple factors affect fabric durability and appearance retention.



Indicates textile with limited on-hand availability. Please call your sales or customer service representative for current stock levels and ordering options.

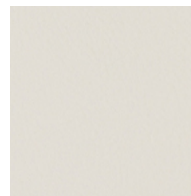
GEIGER

TEXTILES

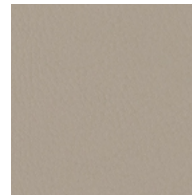
Ecohide Classic

APPLICATION	Seating
CONTENT	100% Polyurethane
BACKING	Polyester
WIDTH	54"
REPEAT	None
ABRASION	250,000 Double Rubs, Wyzenbeek*
FLAMMABILITY	CA TB 117-2013
WEIGHT	16.5 Oz Per Linear Yard
ORIGIN	Taiwan
ENVIRONMENTAL	SCS Indoor Advantage™ Gold FR Chemical Free Heavy Metal Free Prop 65 Chemical Free REACH Compliant
MAINTENANCE	W – Clean with Water-Based Cleanser; Bleach Cleanable – Clean with 10:1 Water to Household Bleach
PRICE GROUP	4
NET PRICE	\$28 Per Yard
NOTE	Bleach Cleanable

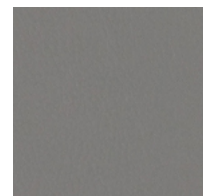
*Abrasion test results exceeding
ACT Performance Guidelines are not
an indicator of product lifespan.
Multiple factors affect fabric durability
and appearance retention.



21401 Ivory



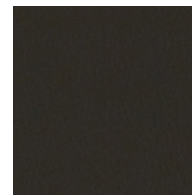
21403 Stone



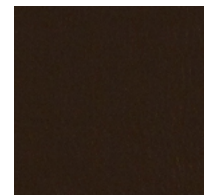
21404 Slate



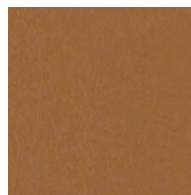
21415 Navy



21416 Grey



21417 Java



21421 Caramel

Indicates textile with limited on-hand availability. Please call your sales or customer service representative for current stock levels and ordering options.

GEIGER

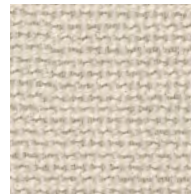
TEXTILES

Envie

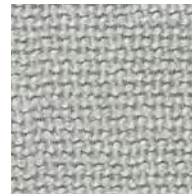
DESIGNED BY BASSAMFELLOWS

APPLICATION	Seating, Geiger Tackboards, Upholstered Walls
CONTENT	85% Post-Consumer Recycled Polyester, 15% Polyester
FINISH	GreenShield ZERO (PFC-Free, PFOA-Free)
WIDTH	54"
REPEAT	None
ABRASION	100,000 Double Rubs, Wyzenbeek* CA TB 117-2013;
FLAMMABILITY	ASTM E84 Unadhered, Class A
WEIGHT	21 Oz Per Linear Yard
ORIGIN	Canada
ENVIRONMENTAL	SCS Indoor Advantage™ Gold Contains Recycled Content FR Chemical Free Prop 65 Chemical Free REACH Compliant PFC-Free Stain Resistant Finish Healthier Hospitals Compliant Living Future Red List Compliant WELL Building Standard Compliant
MAINTENANCE	W/S – Clean with Water-Based Cleanser, or Mild, Dry Cleaning Solvent
CUSTOM FINISHES	Acrylic Backing/PFOA-Free Stain Resistant Finish; Alta; Alta Food & Beverage; Alta Workplace; Nanotex; Nanotex with Impermeable Barrier
PRICE GROUP	5
NET PRICE	\$36 Per Yard

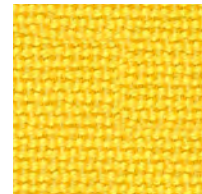
*Abrasion test results exceeding ACT Performance Guidelines are not an indicator of product lifespan. Multiple factors affect fabric durability and appearance retention.



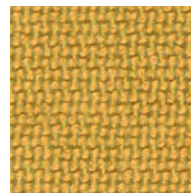
1JA01 Moonlight



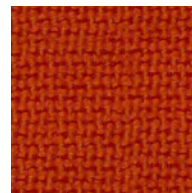
1JA02 Light Gray



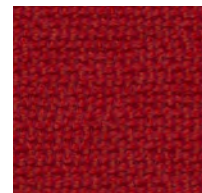
1JA03 Lemon



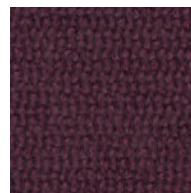
1JA04 Mustard



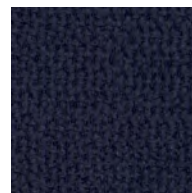
1JA05 Orange



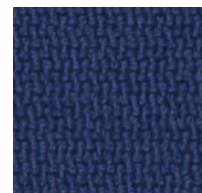
1JA06 Swiss Red



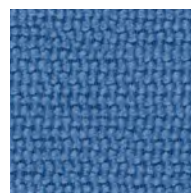
1JA07 Plum



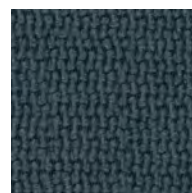
1JA08 Navy



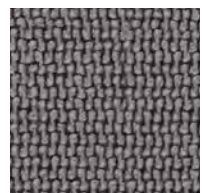
1JA09 Cobalt



1JA10 Deep Cerulean Blue



1JA11 Black Green



1JA13 Sterling



1JA14 Anthracite

Indicates textile with limited on-hand availability. Please call your sales or customer service representative for current stock levels and ordering options.

GEIGER

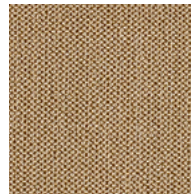
TEXTILES

Epinglé

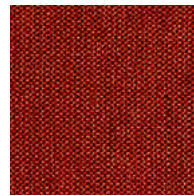
DESIGNED BY SUSAN LYONS

APPLICATION	Seating, Geiger Tackboards
CONTENT	60% Polyester, 40% Acrylic
BACKING	Polyester/Acrylic
WIDTH	56"
REPEAT	None
ABRASION	50,000 Double Rubs, Wyzenbeek*
FLAMMABILITY	CA TB 117-2013
WEIGHT	15 Oz Per Linear Yard
ORIGIN	Germany
ENVIRONMENTAL	SCS Indoor Advantage™ Gold FR Chemical Free Prop 65 Chemical Free OEKO-TEX® Certified Yarns REACH Compliant Healthier Hospitals Compliant Living Future Red List Compliant WELL Building Standard Compliant
MAINTENANCE	W/S – Clean with Water-Based Cleanser, or Mild, Dry Cleaning Solvent; Bleach Cleanable – Clean with 10:1 Water to Household Bleach
CUSTOM FINISHES	Alta; Alta Food & Beverage; Alta Workplace; Nanotex; Nanotex; Nanotex with Impermeable Barrier; PFOA-Free Stain Resistant Finish
PRICE GROUP	7
NET PRICE	\$58 Per Yard
NOTE	Bleach Cleanable

*Abrasion test results exceeding
ACT Performance Guidelines are not
an indicator of product lifespan.
Multiple factors affect fabric durability
and appearance retention.



1GC12 Camel



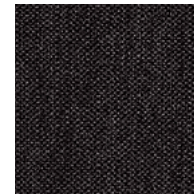
1GC30 Red



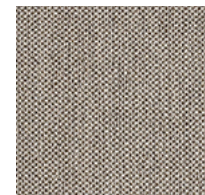
1GC50 Navy



1GC71 Java



1GC80 Charcoal



1GC81 Fog

Indicates textile with limited on-hand availability. Please call your sales or customer service representative for current stock levels and ordering options.

GEIGER

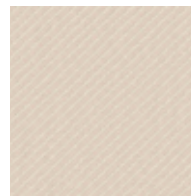
TEXTILES

Essential Twill

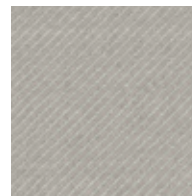
DESIGNED BY BASSAMFELLOWS

APPLICATION	Seating, Geiger Tackboards, Upholstered Walls
CONTENT	70% Post-Consumer Recycled Polyester, 27% Wool, 3% Nylon
FINISH	PFOA-Free Stain Resistant
BACKING	Acrylic
WIDTH	53"
REPEAT	None
ABRASION	100,000 Double Rubs, Wyzenbeek*
FLAMMABILITY	CA TB 117-2013; ASTM E84 Unadhered, Class A
WEIGHT	16.3 Oz Per Linear Yard
ORIGIN	United States
ENVIRONMENTAL	SCS Indoor Advantage™ Gold Contains Bio-Based Materials Contains Recycled Content FR Chemical Free Prop 65 Chemical Free
MAINTENANCE	S – Clean with Mild, Dry Cleaning Solvent
CUSTOM FINISHES	Alta; Alta Food & Beverage; Nanotex; Nanotex with Impermeable Barrier
PRICE GROUP	5
NET PRICE	\$44 Per Yard

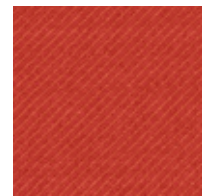
*Abrasion test results exceeding
ACT Performance Guidelines are not
an indicator of product lifespan.
Multiple factors affect fabric durability
and appearance retention.



16801 Cream



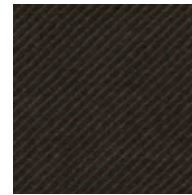
16802 Fog



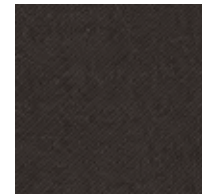
16803 Orange



16804 Natier Blue



16806 Forest



16807 Smoke



16808 Shale

Indicates textile with limited on-hand availability. Please call your sales or customer service representative for current stock levels and ordering options.

GEIGER

TEXTILES

Even

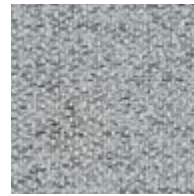
DESIGNED BY BASSAMFELLOWS

APPLICATION	Seating, Geiger Tackboards, Upholstered Walls
CONTENT	100% Polyester
FINISH	PFOA-Free Stain Resistant
BACKING	Acrylic
WIDTH	55"
REPEAT	None
ABRASION	100,000 Double Rubs, Wyzenbeek*
FLAMMABILITY	CA TB 117-2013; ASTM E84 Unadhered, Class A
WEIGHT	10.48 Oz Per Linear Yard
ORIGIN	United States
ENVIRONMENTAL	SCS Indoor Advantage™ Gold FR Chemical Free Prop 65 Chemical Free
MAINTENANCE	W/S – Clean with Water-Based Cleanser, or Mild, Dry Cleaning Solvent; Bleach Cleanable – Clean with 10:1 Water to Household Bleach
CUSTOM FINISHES	Alta; Alta Food & Beverage; Nanotex; Nanotex with Impermeable Barrier
PRICE GROUP	2
NET PRICE	\$20 Per Yard
NOTE	Bleach Cleanable

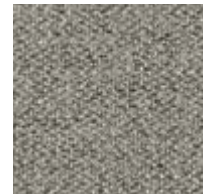
*Abrasion test results exceeding
ACT Performance Guidelines are not
an indicator of product lifespan.
Multiple factors affect fabric durability
and appearance retention.



1DA01 Silver Ore



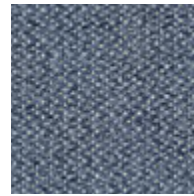
1DA02 Blue Gray



1DA03 Zinc



1DA04 Kale



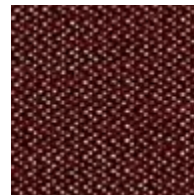
1DA05 Denim



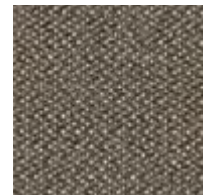
1DA06 Lapis



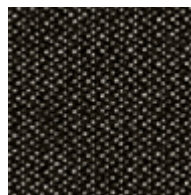
1DA07 Poppy



1DA08 Sangria



1DA09 Smoke



1DA10 Black

Indicates textile with limited on-hand availability. Please call your sales or customer service representative for current stock levels and ordering options.

GEIGER

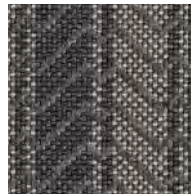
TEXTILES

Foothills

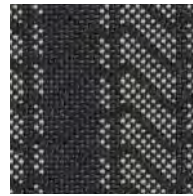
DESIGNED BY JOSEPH WHITE

APPLICATION	Seating
CONTENT	54% Rayon, 43% Wool, 3% Nylon
FINISH	PFOA-Free Stain Resistant
BACKING	Acrylic
WIDTH	53"
REPEAT	¾" V, 2½" H
ABRASION	50,000 Double Rubs, Wyzenbeek*
FLAMMABILITY	CA TB 117-2013
WEIGHT	23.64 Oz Per Linear Yard
ORIGIN	United States
ENVIRONMENTAL	SCS Indoor Advantage™ Gold Contains Bio-Based Materials FR Chemical Free Prop 65 Chemical Free
MAINTENANCE	S – Clean with Mild, Dry Cleaning Solvent
CUSTOM FINISHES	Alta; Alta Food & Beverage; Nanotex; Nanotex with Impermeable Barrier
PRICE GROUP	8
NET PRICE	\$70 Per Yard

*Abrasion test results exceeding
ACT Performance Guidelines are not
an indicator of product lifespan.
Multiple factors affect fabric durability
and appearance retention.



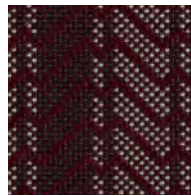
1GT01 Steel Stripe



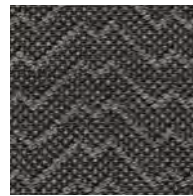
1GT03 Ingot Stripe



1GT04 Cobalt Stripe



1GT05 Blackberry
Stripe



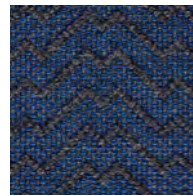
1GT06 Steel



1GT07 Loden



1GT08 Ingot



1GT09 Cobalt



1GT10 Blackberry

Indicates textile with limited on-hand availability. Please call your sales or
customer service representative for current stock levels and ordering options.

GEIGER

TEXTILES

Fringe

DESIGNED BY BASSAMFELLOWS

APPLICATION	Seating
CONTENT	74% Post-Consumer Recycled Polyester, 20% Nylon, 6% Polyester
FINISH	PFOA-Free Stain Resistant
BACKING	Acrylic
WIDTH	54"
REPEAT	9¾" V, 9¾" H; Suitable for Non-Match
ABRASION	100,000 Double Rubs, Wyzenbeek*
FLAMMABILITY	CA TB 117-2013
WEIGHT	15.7 Oz Per Linear Yard
ORIGIN	United States
ENVIRONMENTAL	SCS Indoor Advantage™ Gold Contains Recycled Content FR Chemical Free Prop 65 Chemical Free
MAINTENANCE	W/S – Clean with Water-Based Cleanser, or Mild, Dry Cleaning Solvent; Bleach Cleanable – Clean with 10:1 Water to Household Bleach
CUSTOM FINISHES	Alta; Alta Food & Beverage; Antimicrobial Stain Resistant Finish with Impermeable Barrier; Nanotex; Nanotex with Impermeable Barrier
PRICE GROUP	4
NET PRICE	\$32 Per Yard
NOTE	Bleach Cleanable

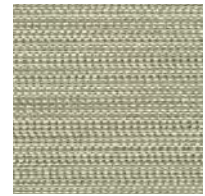
*Abrasion test results exceeding
ACT Performance Guidelines are not
an indicator of product lifespan.
Multiple factors affect fabric durability
and appearance retention.



1AF01 Buckskin



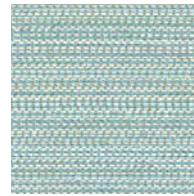
1AF02 Ash Blonde



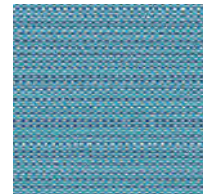
1AF03 Silver Bay



1AF04 Perfect Taupe



1AF05 Morning Sky



1AF06 Lapis



1AF07 Indigo



1AF08 Paprika



1AF09 Deep Red



1AF10 Dark Sienna



1AF11 French Press



1AF12 Black Bay

Indicates textile with limited on-hand availability. Please call your sales or customer service representative for current stock levels and ordering options.

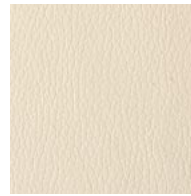
GEIGER

TEXTILES

Granno

APPLICATION	Seating
CONTENT	100% Polyurethane
FINISH	Ink and Stain Resistant
BACKING	Polyester or Polyester/Cotton
WIDTH	54"
REPEAT	None
ABRASION	100,000 Double Rubs, Wyzenbeek*
FLAMMABILITY	CA TB 117-2013
WEIGHT	21 Oz Per Linear Yard
ORIGIN	China
ENVIRONMENTAL	SCS Indoor Advantage™ Gold FR Chemical Free Heavy Metal Free Prop 65 Chemical Free REACH Compliant Healthier Hospitals Compliant Living Future Red List Compliant WELL Building Standard Compliant
MAINTENANCE	W – Clean with Water-Based Cleanser; Bleach Cleanable – Clean with 10:1 Water to Household Bleach
PRICE GROUP	4
NET PRICE	\$34 Per Yard
NOTE	Bleach Cleanable

*Abrasion test results exceeding
ACT Performance Guidelines are not
an indicator of product lifespan.
Multiple factors affect fabric durability
and appearance retention.



17702 Cream



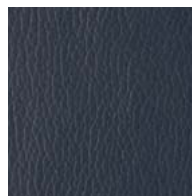
17703 Warm Sand



17707 Cargo Gray



17708 Smoke



17710 Navy



17711 Claret



17780 Abite



17785 Sea Mist

Indicates textile with limited on-hand availability. Please call your sales or customer service representative for current stock levels and ordering options.

GEIGER

TEXTILES

Graphton

DESIGNED BY JOSEPH WHITE

APPLICATION	Seating
CONTENT	61% Wool, 21% Cotton, 18% Nylon
FINISH	PFOA-Free Stain Resistant
WIDTH	52"
REPEAT	4 ½" V 4 ½" H
ABRASION	100,000 Double Rubs, Wyzenbeek*
FLAMMABILITY	CA TB 117-2013
WEIGHT	23.6 Oz Per Linear Yard
ORIGIN	United States
ENVIRONMENTAL	SCS Indoor Advantage™ Gold Contains Bio-Based Materials FR Chemical Free Prop 65 Chemical Free
MAINTENANCE	S – Clean with Mild, Dry Cleaning Solvent
CUSTOM FINISHES	Acrylic Backing/PFOA-Free Stain Resistant Finish; Alta; Alta Food & Beverage; Alta Workplace; Nanotex; Nanotex with Impermeable Barrier
PRICE GROUP	7
NET PRICE	\$64 Per Yard
NOTE	Irregular variations in color are inherent to this material

*Abrasion test results exceeding
ACT Performance Guidelines are not
an indicator of product lifespan.
Multiple factors affect fabric durability
and appearance retention.



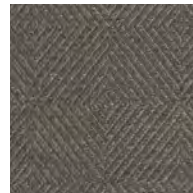
1GU01 Camel



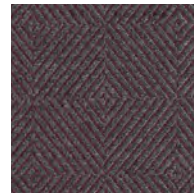
1GU02 Meadow



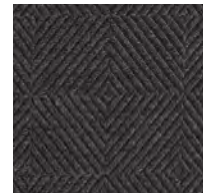
1GU03 Loden



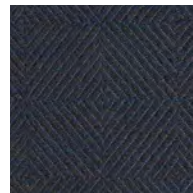
1GU04 Shale



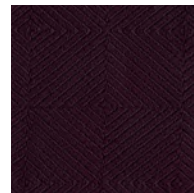
1GU05 Sangria



1GU06 Obsidian



1GU07 Atlantic



1GU08 Bordeaux

Indicates textile with limited on-hand availability. Please call your sales or customer service representative for current stock levels and ordering options.

GEIGER

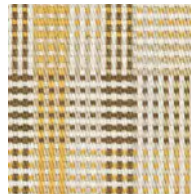
TEXTILES

Gridwork

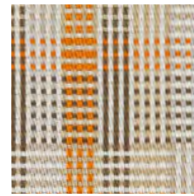
DESIGNED BY BASSAMFELLOWS

APPLICATION	Seating, Geiger Tackboards, Upholstered Walls
CONTENT	100% Post-Consumer Recycled Polyester
FINISH	PFOA-Free Stain Resistant
BACKING	Acrylic
WIDTH	54"
REPEAT	5" V, 4½" H
ABRASION	100,000 Double Rubs, Wyzenbeek*
FLAMMABILITY	CA TB 117-2013; ASTM E84 Unadhered, Class A
WEIGHT	25.15 Oz Per Linear Yard
ORIGIN	United States
ENVIRONMENTAL	SCS Indoor Advantage™ Gold Contains Recycled Content FR Chemical Free Prop 65 Chemical Free
MAINTENANCE	W/S – Clean with Water-Based Cleanser, or Mild, Dry Cleaning Solvent; Bleach Cleanable – Clean with 10:1 Water to Household Bleach
CUSTOM FINISHES	Alta; Alta Food & Beverage; Nanotex; Nanotex with Impermeable Barrier
PRICE GROUP	6
NET PRICE	\$48 per yard
NOTE	Bleach Cleanable

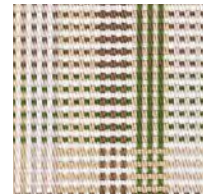
*Abrasion test results exceeding ACT Performance Guidelines are not an indicator of product lifespan. Multiple factors affect fabric durability and appearance retention.



1AM01 Mustard



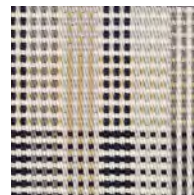
1AM02 Persimmon



1AM03 Willow



1AM04 Red



1AM05 Camel



1AM06 Natier Blue

Indicates textile with limited on-hand availability. Please call your sales or customer service representative for current stock levels and ordering options.

GEIGER

TEXTILES

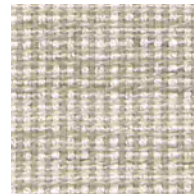
Harlow

DESIGNED BY BASSAMFELLOWS

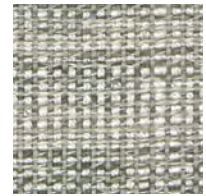
APPLICATION	Seating, Geiger Tackboards
CONTENT	37% Viscose, 26% Cotton, 17% Acrylic, 13% Linen, 7% Polyester
FINISH	PFOA-Free Stain Resistant
WIDTH	54"
REPEAT	None
ABRASION	30,000 Cycles, Martindale
FLAMMABILITY	CA TB 117-2013
WEIGHT	17.4 Oz Per Linear Yard
ORIGIN	Italy
ENVIRONMENTAL	SCS Indoor Advantage™ Gold Contains Bio-Based Materials FR Chemical Free Prop 65 Chemical Free REACH Compliant
MAINTENANCE	S – Clean with Mild, Dry Cleaning Solvent
CUSTOM FINISHES	Alta; Alta Food & Beverage; Alta Workplace; Nanotex; Nanotex with Impermeable Barrier
PRICE GROUP	5
NET PRICE	\$36 Per Yard



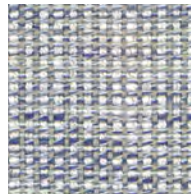
1GE01 Andro



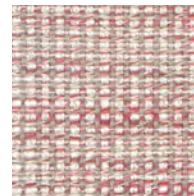
1GE02 Linota



1GE03 Norland



1GE04 Valour



1GE06 Raja

Indicates textile with limited on-hand availability. Please call your sales or customer service representative for current stock levels and ordering options.

GEIGER

TEXTILES

Herringbone

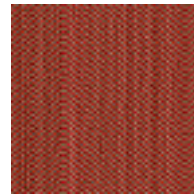
DESIGNED BY SUSAN LYONS

APPLICATION	Seating
CONTENT	50% Nylon, 27% Cotton, 23% Polyester
FINISH	GreenShield
BACKING	Acrylic
WIDTH	54"
REPEAT	2¼" V
ABRASION	100,000 Double Rubs, Wyzenbeek*
FLAMMABILITY	CA TB 117-2013
WEIGHT	15.9 Oz Per Linear Yard
ORIGIN	United States
ENVIRONMENTAL	SCS Indoor Advantage™ Gold Contains Bio-Based Materials FR Chemical Free Prop 65 Chemical Free
MAINTENANCE	S – Clean with Mild, Dry Cleaning Solvent
CUSTOM FINISHES	Alta; Alta Food & Beverage; Nanotex; Nanotex with Impermeable Barrier
PRICE GROUP	5
NET PRICE	\$30 Per Yard

*Abrasion test results exceeding
ACT Performance Guidelines are not
an indicator of product lifespan.
Multiple factors affect fabric durability
and appearance retention.



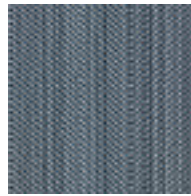
19310 Copper



19330 Vermillion



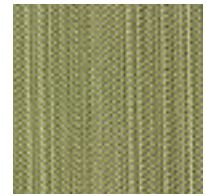
19350 Oxford



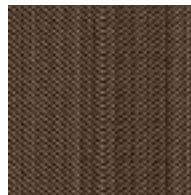
19351 Cadet



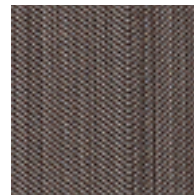
19352 Navy



19360 Willow



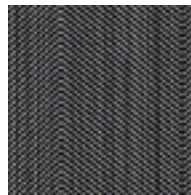
19370 Trench



19371 Umber



19380 Stone



19381 Flannel

Indicates textile with limited on-hand availability. Please call your sales or customer service representative for current stock levels and ordering options.

GEIGER

TEXTILES

Houndstooth Check

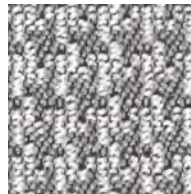
DESIGNED BY BASSAMFELLOWS

APPLICATION	Seating, Geiger Tackboards
CONTENT	66% Acrylic, 34% Polyester
WIDTH	56"
REPEAT	½" V, ½" H
ABRASION	100,000 Double Rubs, Wyzenbeek*
FLAMMABILITY	CA TB 117-2013
WEIGHT	25.5 Oz Per Linear Yard
ORIGIN	Germany
ENVIRONMENTAL	SCS Indoor Advantage™ Gold FR Chemical Free Prop 65 Chemical Free OEKO-TEX® Certified Yarns REACH Compliant Healthier Hospitals Compliant Living Future Red List Compliant WELL Building Standard Compliant
MAINTENANCE	W/S – Clean with Water-Based Cleanser, or Mild, Dry Cleaning Solvent; Bleach Cleanable – Clean with 10:1 Water to Household Bleach
CUSTOM FINISHES	Alta; Alta Food & Beverage; Alta Workplace; Nanotex; Nanotex; Nanotex with Impermeable Barrier; PFOA-Free Stain Resistant Finish
PRICE GROUP	5
NET PRICE	\$38 Per Yard
NOTE	Bleach Cleanable

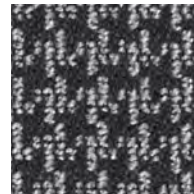
*Abrasion test results exceeding
ACT Performance Guidelines are not
an indicator of product lifespan.
Multiple factors affect fabric durability
and appearance retention.



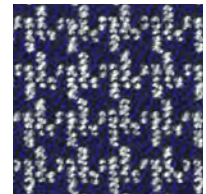
Indicates textile with limited on-hand availability. Please call your sales or customer service representative for current stock levels and ordering options.



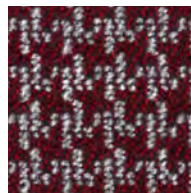
1DC01 Platinum



1DC02 Charcoal



1DC03 Royal



1DC04 Garnet

GEIGER

TEXTILES

Ingénue

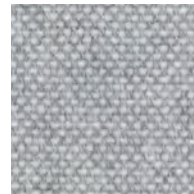
DESIGNED BY BASSAMFELLOWS

APPLICATION	Seating, Geiger Tackboards
CONTENT	28% Wool, 26% Viscose, 25% Acrylic, 16% Polyester, 5% Cotton
FINISH	PFOA-Free Stain Resistant
WIDTH	54"
REPEAT	None
ABRASION	75,000 Cycles, Martindale*
FLAMMABILITY	CA TB 117-2013
WEIGHT	18 Oz Per Linear Yard
ORIGIN	Italy
ENVIRONMENTAL	SCS Indoor Advantage™ Gold Contains Bio-Based Materials FR Chemical Free Prop 65 Chemical Free REACH Compliant
MAINTENANCE	S – Clean with Mild, Dry Cleaning Solvent
CUSTOM FINISHES	Acrylic Backing/PFOA-Free Stain Resistant Finish; Alta; Alta Food & Beverage; Alta Workplace; Nanotex; Nanotex with Impermeable Barrier
PRICE GROUP	5
NET PRICE	\$58 Per Yard

*Abrasion test results exceeding
ACT Performance Guidelines are not
an indicator of product lifespan.
Multiple factors affect fabric durability
and appearance retention.



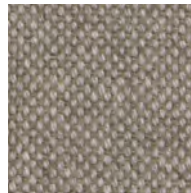
1GH01 Sand



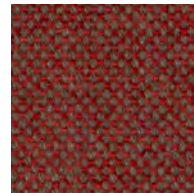
1GH02 Fog



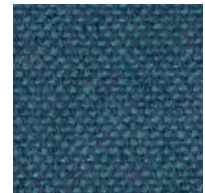
1GH03 Flannel



1GH04 Trench



1GH05 Vermilion



1GH06 Adriatic



1GH07 Umber



1GH08 Charcoal

GEIGER

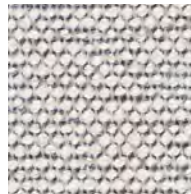
TEXTILES

lota

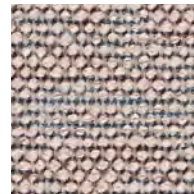
DESIGNED BY BASSAMFELLOWS

APPLICATION	Seating, Geiger Tackboards
CONTENT	72% Post-Consumer Recycled Polyester, 28% Cotton
FINISH	GreenShield
BACKING	Acrylic
WIDTH	54"
ABRASION	100,000 Double Rubs, Wyzenbeek*
FLAMMABILITY	CA TB 117-2013
WEIGHT	25 Oz Per Linear Yard
ORIGIN	Canada
ENVIRONMENTAL	SCS Indoor Advantage™ Gold Contains Bio-Based Materials Contains Recycled Content FR Chemical Free Prop 65 Chemical Free REACH Compliant
MAINTENANCE	S – Clean with Mild, Dry Cleaning Solvent
CUSTOM FINISHES	Alta; Alta Food & Beverage; Nanotex; Nanotex with Impermeable Barrier
PRICE GROUP	5
NET PRICE	\$36 per yard

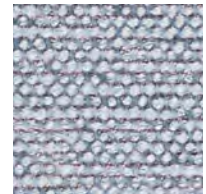
*Abrasion test results exceeding
ACT Performance Guidelines are not
an indicator of product lifespan.
Multiple factors affect fabric durability
and appearance retention.



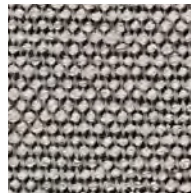
1AS01 Pearl Gray



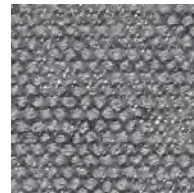
1AS02 Light
Chestnut Brown



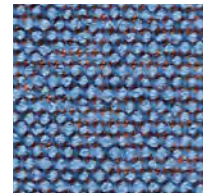
1AS03 Light Blue



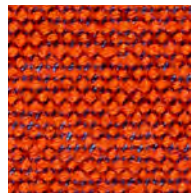
1AS04 Light Gray



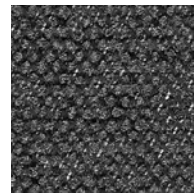
1AS05 Ferric Gray



1AS06 Deep
Cerulean Blue



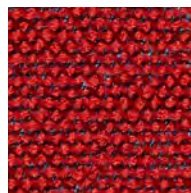
1AS07 Carrot



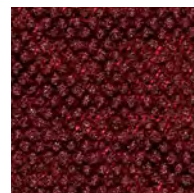
1AS08 Natural
Native Umber



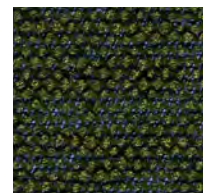
1AS09 Chestnut
Brown



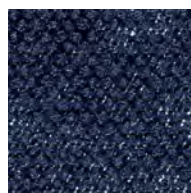
1AS10 Claret



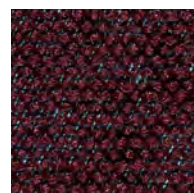
1AS11 Ruby Red



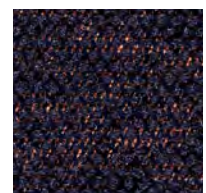
1AS12 Forest



1AS13 Navy



1AS14 Plum



1AS15 Burnt Umber

Indicates textile with limited on-hand availability. Please call your sales or
customer service representative for current stock levels and ordering options.

GEIGER

TEXTILES

Iron Cloth

ORIGINALLY DESIGNED BY WARD BENNETT

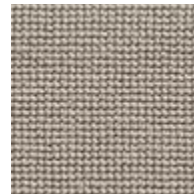
DESIGN UPDATED BY SUSAN LYONS

APPLICATION	Seating
CONTENT	61% Nylon, 22% Rayon, 17% Cotton
BACKING	Latex
WIDTH	54"
REPEAT	None
ABRASION	100,000 Double Rubs, Wyzenbeek*
FLAMMABILITY	CA TB 117-2013
WEIGHT	31.5 Oz Per Linear Yard
ORIGIN	United States
ENVIRONMENTAL	SCS Indoor Advantage™ Gold Contains Bio-Based Materials FR Chemical Free Prop 65 Chemical Free
MAINTENANCE	W/S – Clean with Water-Based Cleanser, or Mild, Dry Cleaning Solvent
CUSTOM FINISHES	Acrylic Backing/PFOA-Free Stain Resistant Finish; PFOA-Free Stain Resistant Finish
PRICE GROUP	5
NET PRICE	\$36 Per Yard

*Abrasion test results exceeding
ACT Performance Guidelines are not
an indicator of product lifespan.
Multiple factors affect fabric durability
and appearance retention.



19510 Cream



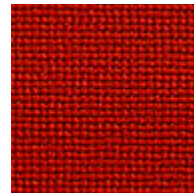
19511 Stone



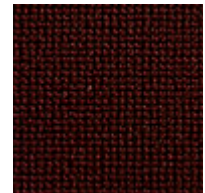
19512 Camel



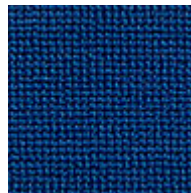
19520 Citron



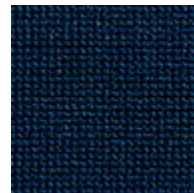
19530 Red



19531 Cordovan



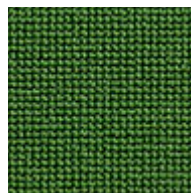
19550 Sky



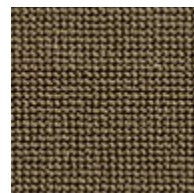
19551 Navy



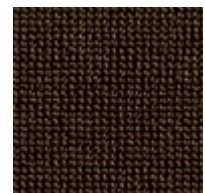
19552 Cadet



19560 Leaf



19570 Trench



19571 Umber



19580 Black

Indicates textile with limited on-hand availability. Please call your sales or customer service representative for current stock levels and ordering options.

GEIGER

TEXTILES

Irregular Grid

DESIGNED BY BASSAMFELLOWS

APPLICATION	Seating, Geiger Tackboards
CONTENT	85% Polyester, 14% Rayon, 1% Nylon
FINISH	PFOA-Free Stain Resistant
BACKING	Acrylic
WIDTH	56"
REPEAT	3 $\frac{5}{8}$ " V, 14 $\frac{3}{8}$ " H
ABRASION	100,000 Double Rubs, Wyzenbeek*
FLAMMABILITY	CA TB 117-2013
WEIGHT	16.84 Oz Per Linear Yard
ORIGIN	United States
ENVIRONMENTAL	SCS Indoor Advantage™ Gold FR Chemical Free Prop 65 Chemical Free
MAINTENANCE	S – Clean with Mild, Dry Cleaning Solvent
CUSTOM FINISHES	Alta; Alta Food & Beverage; Nanotex; Nanotex with Impermeable Barrier
PRICE GROUP	4
NET PRICE	\$22 per yard



1AT01 Fog



1AT02 Stone



1AT03 Trench



1AT04 Gray Blue



1AT05 Flint

*Abrasion test results exceeding
ACT Performance Guidelines are not
an indicator of product lifespan.
Multiple factors affect fabric durability
and appearance retention.



Indicates textile with limited on-hand availability. Please call your sales or
customer service representative for current stock levels and ordering options.

GEIGER

TEXTILES

Kalista

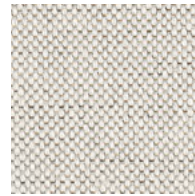
DESIGNED BY BASSAMFELLOWS

APPLICATION	Seating, Geiger Tackboards
CONTENT	71% Post-Industrial Recycled Cotton, 18% Post-Industrial Recycled Polyester, 11% Polyester
FINISH	PFOA-Free Stain Resistant
WIDTH	54"
REPEAT	None
ABRASION	90,000 Double Rubs, Wyzenbeek*
FLAMMABILITY	CA TB 117-2013
WEIGHT	20.8 Oz Per Linear Yard
ORIGIN	United States
ENVIRONMENTAL	SCS Indoor Advantage™ Gold Contains Bio-Based Materials Contains Recycled Content FR Chemical Free Prop 65 Chemical Free
MAINTENANCE	S – Clean with Mild, Dry Cleaning Solvent
CUSTOM FINISHES	Acrylic Backing/PFOA-Free Stain Resistant Finish; Alta; Alta Food & Beverage; Alta Workplace; Nanotex; Nanotex with Impermeable Barrier
PRICE GROUP	4
NET PRICE	\$42 Per Yard

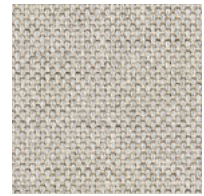
*Abrasion test results exceeding
ACT Performance Guidelines are not
an indicator of product lifespan.
Multiple factors affect fabric durability
and appearance retention.



1AL01 Cotton



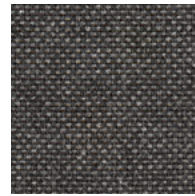
1AL02 Natural



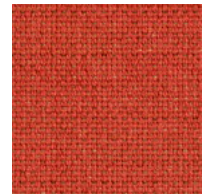
1AL03 Titanium



1AL04 Pewter



1AL05 Starry Night



1AL06 Red Hot



1AL07 Sun Kissed



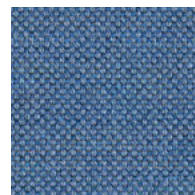
1AL08 Dune



1AL09 Beach Glass



1AL10 Bluestone



1AL11 Seaside



1AL12 Night Sky

GEIGER

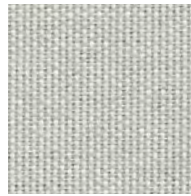
TEXTILES

Lona del Sol

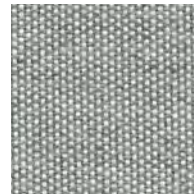
DESIGNED BY BASSAMFELLOWS

APPLICATION	Seating, Geiger Tackboards
CONTENT	98% Sunbrella® Solution Dyed Acrylic, 2% Polyester
FINISH	PFOA-Free Stain Resistant
WIDTH	54"
REPEAT	None
ABRASION	100,000 Double Rubs, Wyzenbeek*
FLAMMABILITY	CA TB 117-2013
WEIGHT	13.2 Oz Per Linear Yard
ORIGIN	United States
ENVIRONMENTAL	SCS Indoor Advantage™ Gold Facts® Silver Certified FR Chemical Free OEKO-TEX® Certified Prop 65 Chemical Free REACH Compliant Solution-Dyed
MAINTENANCE	W/S – Clean with Water-Based Cleanser, or Mild, Dry Cleaning Solvent; Bleach Cleanable – Clean with 10:1 Water to Household Bleach
CUSTOM FINISHES	Acrylic Backing/PFOA-Free Stain Resistant Finish; Alta; Alta Food & Beverage; Alta Workplace; Nanotex; Nanotex with Impermeable Barrier
PRICE GROUP	5
NET PRICE	\$36 Per Yard
NOTE	Bleach Cleanable, Indoor/Outdoor

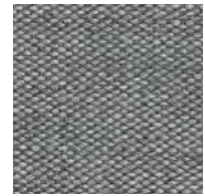
*Abrasion test results exceeding
ACT Performance Guidelines are not
an indicator of product lifespan.
Multiple factors affect fabric durability
and appearance retention.



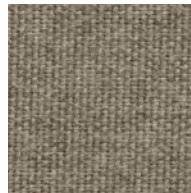
1DK01 Blanca



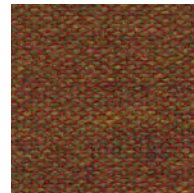
1DK02 Silver



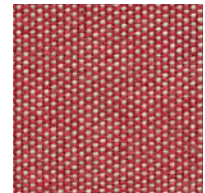
1DK03 Zinc



1DK04 Hemp



1DK05 Allspice



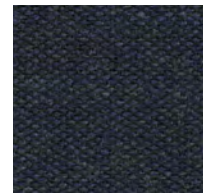
1DK06 Annatto



1DK07 Sumac



1DK08 Azul



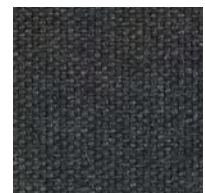
1DK09 Armada



1DK10 Deep Teal



1DK11 Sage



1DK12 Carbon

Indicates textile with limited on-hand availability. Please call your sales or customer service representative for current stock levels and ordering options.

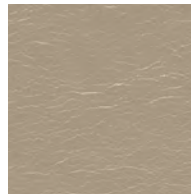
GEIGER

TEXTILES

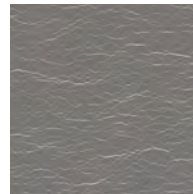
Lucio

APPLICATION	Seating
CONTENT	100% Polycarbonate Polyurethane
FINISH	Ink and Stain Resistant
BACKING	Rayon/Polyester
WIDTH	54"
REPEAT	None
ABRASION	500,000 Double Rubs, Wyzenbeek*
FLAMMABILITY	CA TB 117-2013
WEIGHT	19.9 Oz Per Linear Yard
ORIGIN	China
ENVIRONMENTAL	SCS Indoor Advantage™ Gold FR Chemical Free Heavy Metal Free Prop 65 Chemical Free REACH Compliant Healthier Hospitals Compliant Living Future Red List Compliant WELL Building Standard Compliant
MAINTENANCE	W – Clean with Water-Based Cleanser; Bleach Cleanable – Clean with 10:1 Water to Household Bleach
PRICE GROUP	5
NET PRICE	\$36 Per Yard
NOTE	Bleach Cleanable

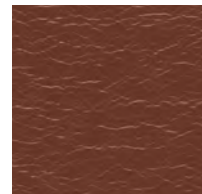
*Abrasion test results exceeding
ACT Performance Guidelines are not
an indicator of product lifespan.
Multiple factors affect fabric durability
and appearance retention.



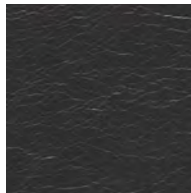
1GL02 Nickel



1GL03 Zinc



1GL04 Bronze



1GL05 Onyx

Indicates textile with limited on-hand availability. Please call your sales or customer service representative for current stock levels and ordering options.

GEIGER

TEXTILES

Matiz

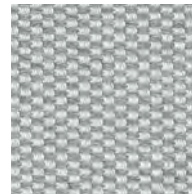
DESIGNED BY BASSAMFELLOWS

APPLICATION	Seating, Geiger Tackboards
CONTENT	100% Sunbrella® Solution Dyed Acrylic
FINISH	PFOA-Free Stain Resistant
WIDTH	54"
REPEAT	None
ABRASION	100,000 Double Rubs, Wyzenbeek*
FLAMMABILITY	CA TB 117-2013
WEIGHT	20 Oz Per Linear Yard
ORIGIN	United States
ENVIRONMENTAL	SCS Indoor Advantage™ Gold Facts® Silver Certified FR Chemical Free OEKO-TEX® Certified Prop 65 Chemical Free REACH Compliant Solution-Dyed
MAINTENANCE	W/S – Clean with Water-Based Cleanser, or Mild, Dry Cleaning Solvent; Bleach Cleanable – Clean with 10:1 Water to Household Bleach
CUSTOM FINISHES	Acrylic Backing/PFOA-Free Stain Resistant Finish; Alta; Alta Food & Beverage; Alta Workplace; Nanotex; Nanotex with Impermeable Barrier
PRICE GROUP	6
NET PRICE	\$52 Per Yard
NOTE	Bleach Cleanable, Indoor/Outdoor

*Abrasion test results exceeding
ACT Performance Guidelines are not
an indicator of product lifespan.
Multiple factors affect fabric durability
and appearance retention.



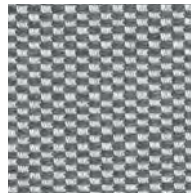
1DM01 Crema



1DM02 Platinum



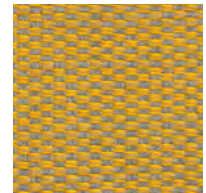
1DM03 Sky Blue



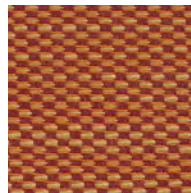
1DM04 Aluminum



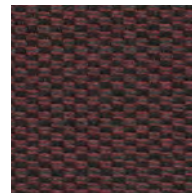
1DM05 Wheat



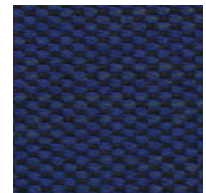
1DM06 Sunflower



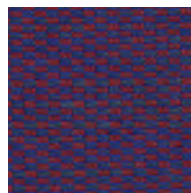
1DM07 Marigold



1DM08 Grenache



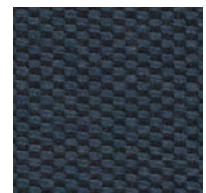
1DM09 Cobalt



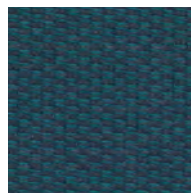
1DM10 Sialia



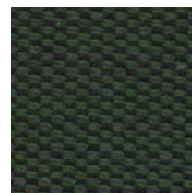
1DM11 Talavera



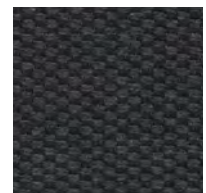
1DM12 Pacific



1DM13 Caribbean



1DM14 Juniper



1DM15 Graphite

Indicates textile with limited on-hand availability. Please call your sales or customer service representative for current stock levels and ordering options.

GEIGER

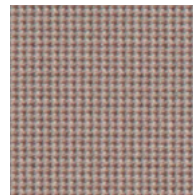
TEXTILES

Micro Houndstooth

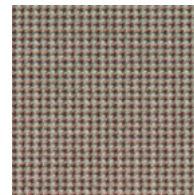
DESIGNED BY BASSAMFELLOWS

APPLICATION	Seating, Geiger Tackboards, Upholstered Walls
CONTENT	50% Polyester, 33% Post-Consumer Recycled Polyester, 17% Post-Industrial Recycled Polyester
FINISH	PFOA-Free Stain Resistant
BACKING	Acrylic
WIDTH	57"
REPEAT	None
ABRASION	60,000 Double Rubs, Wyzenbeek*
FLAMMABILITY	CA TB 117-2013; ASTM E84 Unadhered, Class A
WEIGHT	13.4 Oz Per Linear Yard
ORIGIN	United States
ENVIRONMENTAL	SCS Indoor Advantage™ Gold Contains Recycled Content FR Chemical Free Prop 65 Chemical Free
MAINTENANCE	W/S – Clean with Water-Based Cleanser, or Mild, Dry Cleaning Solvent; Bleach Cleanable – Clean with 10:1 Water to Household Bleach
CUSTOM FINISHES	Alta; Alta Food & Beverage; Antimicrobial Stain Resistant Finish with Impermeable Barrier; Nanotex; Nanotex with Impermeable Barrier
PRICE GROUP	4
NET PRICE	\$24 Per Yard
NOTE	Bleach Cleanable

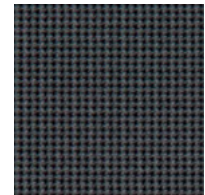
*Abrasion test results exceeding ACT Performance Guidelines are not an indicator of product lifespan. Multiple factors affect fabric durability and appearance retention.



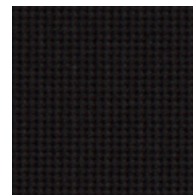
1MH02 Oatmeal



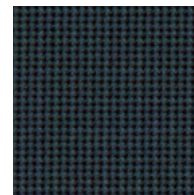
1MH03 Coffee Bean



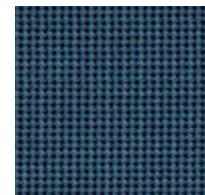
1MH04 Charcoal



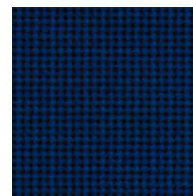
1MH05 Dark Night



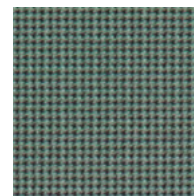
1MH06 Onyx



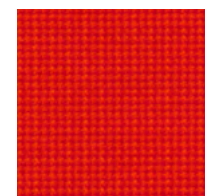
1MH07 Gray Blue



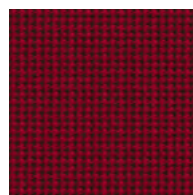
1MH08 Federal



1MH09 Gray Green



1MH10 Blaze



1MH11 Gothic Red

Indicates textile with limited on-hand availability. Please call your sales or customer service representative for current stock levels and ordering options.

GEIGER

TEXTILES

Milaner

DESIGNED BY BASSAMFELLOWS

APPLICATION	Seating
CONTENT	56% Wool, 10% Acrylic, 10% Alpaca, 10% Cotton, 8% Nylon, 6% Rayon
WIDTH	55"
REPEAT	None
ABRASION	70,000 Cycles, Martindale*
FLAMMABILITY	CA TB 117-2013
WEIGHT	15.4 Oz Per Linear Yard
ORIGIN	Italy
ENVIRONMENTAL	SCS Indoor Advantage™ Gold Contains Bio-Based Materials FR Chemical Free Prop 65 Chemical Free REACH Compliant Healthier Hospitals Compliant Living Future Red List Compliant WELL Building Standard Compliant
MAINTENANCE	S – Clean with Mild, Dry Cleaning Solvent
CUSTOM FINISHES	Acrylic Backing/PFOA-Free Stain Resistant Finish; Alta; Alta Food & Beverage; Alta Workplace; Antimicrobial Stain Resistant Finish with Impermeable Barrier; Nanotex; Nanotex with Impermeable Barrier; PFOA-Free Stain Resistant Finish
PRICE GROUP	7
NET PRICE	\$82 Per Yard

*Abrasion test results exceeding ACT Performance Guidelines are not an indicator of product lifespan. Multiple factors affect fabric durability and appearance retention.



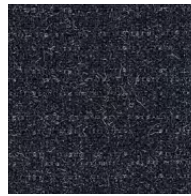
17101 Linen



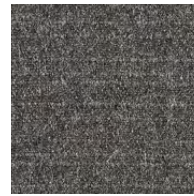
17102 Flax



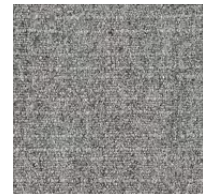
17103 Bark



17104 Deep Navy



17105 Charcoal



17106 Medium Gray



17107 Ash



17108 Crimson

GEIGER

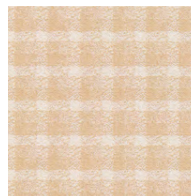
TEXTILES

Mini Plaid

DESIGNED BY BASSAMFELLOWS

APPLICATION	Seating, Geiger Tackboards, Upholstered Walls
CONTENT	100% Polyester
FINISH	PFOA-Free Stain Resistant
BACKING	Acrylic
WIDTH	56"
REPEAT	¾" V, ¾" H
ABRASION	65,000 Double Rubs, Wyzenbeek*
FLAMMABILITY	CA TB 117-2013; ASTM E84 Unadhered, Class A
WEIGHT	11.4 Oz Per Linear Yard
ORIGIN	United States
ENVIRONMENTAL	SCS Indoor Advantage™ Gold FR Chemical Free Prop 65 Chemical Free
MAINTENANCE	W/S – Clean with Water-Based Cleanser, or Mild, Dry Cleaning Solvent; Bleach Cleanable – Clean with 10:1 Water to Household Bleach
CUSTOM FINISHES	Alta; Alta Food & Beverage; Antimicrobial Stain Resistant Finish with Impermeable Barrier; Nanotex; Nanotex with Impermeable Barrier
PRICE GROUP	3
NET PRICE	\$26 Per Yard
NOTE	Bleach Cleanable

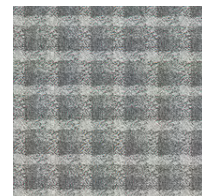
*Abrasion test results exceeding ACT Performance Guidelines are not an indicator of product lifespan. Multiple factors affect fabric durability and appearance retention.



1MP01 Vintage Ivory



1MP02 Light Gray



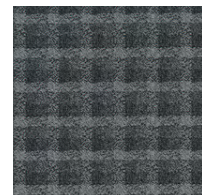
1MP03 Ore



1MP04 Coffee Bean



1MP05 Shadow



1MP06 Charcoal



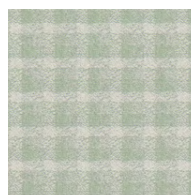
1MP07 Black Onyx



1MP08 Gray Blue



1MP09 Deep Federal



1MP10 Celadon



1MP11 Blaze



1MP12 Lipstick

Indicates textile with limited on-hand availability. Please call your sales or customer service representative for current stock levels and ordering options.

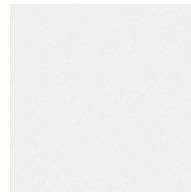
GEIGER

TEXTILES

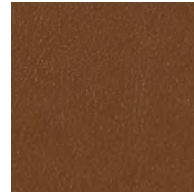
Novello

APPLICATION	Seating
CONTENT	100% Polycarbonate Polyurethane
FINISH	Ink and Stain Resistant
BACKING	Polyester
WIDTH	54"
REPEAT	None
ABRASION	100,000 Double Rubs, Wyzenbeek*
FLAMMABILITY	CA TB 117-2013
WEIGHT	17.7 Oz Per Linear Yard
ORIGIN	China
ENVIRONMENTAL	SCS Indoor Advantage™ Gold FR Chemical Free Heavy Metal Free Prop 65 Chemical Free REACH Compliant Healthier Hospitals Compliant Living Future Red List Compliant WELL Building Standard Compliant
MAINTENANCE	W – Clean with Water-Based Cleanser; Bleach Cleanable – Clean with 10:1 Water to Household Bleach
PRICE GROUP	4
NET PRICE	\$45 Per Yard
NOTE	Bleach Cleanable

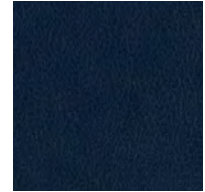
*Abrasion test results exceeding
ACT Performance Guidelines are not
an indicator of product lifespan.
Multiple factors affect fabric durability
and appearance retention.



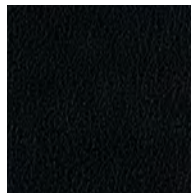
1GR01 Pure



1GR03 Umber



1GR04 Midnight
Blue



1GR06 Black

Indicates textile with limited on-hand availability. Please call your sales or customer service representative for current stock levels and ordering options.

GEIGER

TEXTILES

Ottoman

DESIGNED BY SUSAN LYONS

APPLICATION	Seating, Geiger Tackboards, Upholstered Walls
CONTENT	100% Post-Consumer Recycled Polyester
FINISH	GreenShield
WIDTH	54"
REPEAT	None
ABRASION	100,000 Double Rubs, Wyzenbeek*
FLAMMABILITY	CA TB 117-2013; ASTM E84 Unadhered, Class A
WEIGHT	16 Oz Per Linear Yard
ORIGIN	Canada
ENVIRONMENTAL	SCS Indoor Advantage™ Gold Contains Recycled Content FR Chemical Free Prop 65 Chemical Free REACH Compliant
MAINTENANCE	W/S – Clean with Water-Based Cleanser, or Mild, Dry Cleaning Solvent
CUSTOM FINISHES	Acrylic Backing/PFOA-Free Stain Resistant Finish; Alta; Alta Food & Beverage; Alta Workplace; Antimicrobial Stain Resistant Finish with Impermeable Barrier; Nanotex; Nanotex with Impermeable Barrier
PRICE GROUP	4
NET PRICE	\$36 Per Yard

*Abrasion test results exceeding
ACT Performance Guidelines are not
an indicator of product lifespan.
Multiple factors affect fabric durability
and appearance retention.



19710 Cream



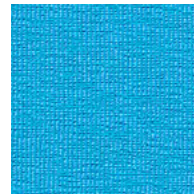
19711 Camel



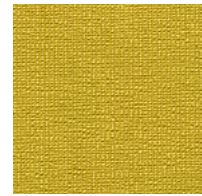
19712 Vicuna



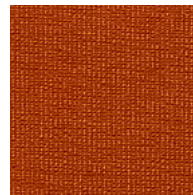
19713 Stone



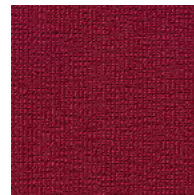
19719 Aqua



19720 Citron



19721 Luggage



19728 Ruby



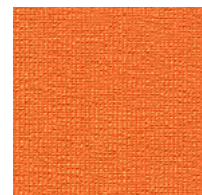
19729 Currant



19730 Red



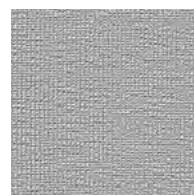
19731 Blaze



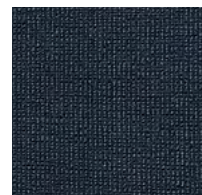
19732 Persimmon



19748 Titanium



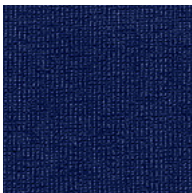
19749 Pewter



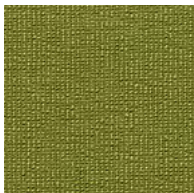
19751 Cadet

Indicates textile with limited on-hand availability. Please call your sales or
customer service representative for current stock levels and ordering options.

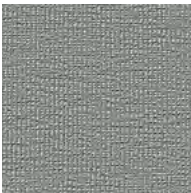
Ottoman



19752 Blue



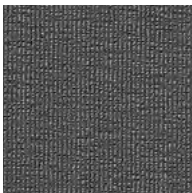
19760 Willow



19767 Sterling



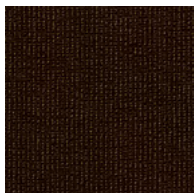
19768 Flint



19769 Slate



19770 Trench



19771 Java



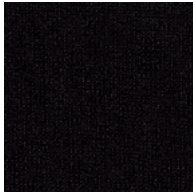
19777 Deep Sea



19778 Navy



19779 Metal



19780 Black

Indicates textile with limited on-hand availability. Please call your sales or customer service representative for current stock levels and ordering options.

GEIGER

TEXTILES

Overture

DESIGNED BY BASSAMFELLOWS

APPLICATION	Seating, Geiger Tackboards
CONTENT	36% Cotton, 26% Acrylic, 16% Rayon, 10% Nylon, 7% Wool, 5% Linen
FINISH	PFOA-Free Stain Resistant
WIDTH	54"
REPEAT	None
ABRASION	60,000 Cycles, Martindale*
FLAMMABILITY	CA TB 117-2013
WEIGHT	28.35 Oz Per Linear Yard
ORIGIN	Italy
ENVIRONMENTAL	SCS Indoor Advantage™ Gold Contains Bio-Based Materials FR Chemical Free Prop 65 Chemical Free REACH Compliant
MAINTENANCE	S – Clean with Mild, Dry Cleaning Solvent
CUSTOM FINISHES	Acrylic Backing/PFOA-Free Stain Resistant Finish; Alta; Alta Food & Beverage; Alta Workplace; Nanotex; Nanotex with Impermeable Barrier
PRICE GROUP	6
NET PRICE	\$54 Per Yard



1GF01 Fawn



1GF03 Earthen

*Abrasion test results exceeding
ACT Performance Guidelines are not
an indicator of product lifespan.
Multiple factors affect fabric durability
and appearance retention.



Indicates textile with limited on-hand availability. Please call your sales or
customer service representative for current stock levels and ordering options.

GEIGER

TEXTILES

Panno di Dolce

DESIGNED BY BASSAMFELLOWS

APPLICATION	Seating, Geiger Tackboards, Upholstered Walls†
CONTENT	65% Wool, 20% Nylon, 15% Alpaca
WIDTH	55"
REPEAT	None
ABRASION	75,000 Cycles, Martindale*
FLAMMABILITY	CA TB 117-2013; ASTM E84 Unadhered, Class A**
WEIGHT	15.30 Oz Per Linear Yard
ORIGIN	Italy
ENVIRONMENTAL	SCS Indoor Advantage™ Gold Contains Bio-Based Materials FR Chemical Free Prop 65 Chemical Free REACH Compliant Healthier Hospitals Compliant Living Future Red List Compliant WELL Building Standard Compliant
MAINTENANCE	S – Clean with Mild, Dry Cleaning Solvent
CUSTOM FINISHES	Acrylic Backing/PFOA-Free Stain Resistant Finish; Alta; Alta Food & Beverage; Alta Workplace; Nanotex; Nanotex with Impermeable Barrier; PFOA-Free Stain Resistant Finish; Fire Retardant (FR) Finish for Upholstered Wall Panel Use
PRICE GROUP	7
NET PRICE	\$79 Per Yard

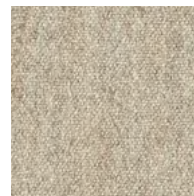
NOTE †For upholstered wall application, due to fiber content, puddling and sagging can occur if the installation is not 24/7 climate controlled.

*Abrasion test results exceeding ACT Performance Guidelines are not an indicator of product lifespan. Multiple factors affect fabric durability and appearance retention.

**Passes ASTM E84, Unadhered Class A for Upholstered Wall application with use of Fire Retardant (FR) Finish.



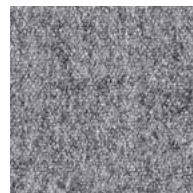
1AV01 Fog



1AV02 Dune



1AV03 Trench



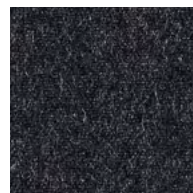
1AV04 Flannel



1AV05 Charcoal



1AV06 Umber



1AV07 Deep Navy



1AV08 Graphite



1AV09 Orange



1AV10 Pink



1AV11 Deep Red



1AV12 Bright Green



1AV13
Cerulean Blue



1AV14 Deep
Cerulean Blue

GEIGER

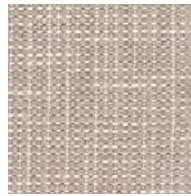
TEXTILES

Pantile

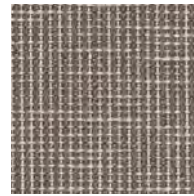
DESIGNED BY BASSAMFELLOWS

APPLICATION	Seating, Geiger Tackboards
CONTENT	54% Cotton, 40% Polyester, 6% Acrylic
FINISH	PFOA-Free Stain Resistant
BACKING	Acrylic
WIDTH	54"
REPEAT	None
ABRASION	100,000 Double Rubs, Wyzenbeek*
FLAMMABILITY	CA TB 117-2013
WEIGHT	26.67 Oz Per Linear Yard
ORIGIN	Italy
ENVIRONMENTAL	SCS Indoor Advantage™ Gold Contains Bio-Based Materials FR Chemical Free Prop 65 Chemical Free REACH Compliant
MAINTENANCE	S – Clean with Mild, Dry Cleaning Solvent
CUSTOM FINISHES	Alta; Alta Food & Beverage; Nanotex; Nanotex with Impermeable Barrier
PRICE GROUP	7
NET PRICE	\$54 per yard

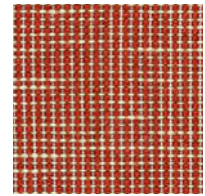
*Abrasion test results exceeding
ACT Performance Guidelines are not
an indicator of product lifespan.
Multiple factors affect fabric durability
and appearance retention.



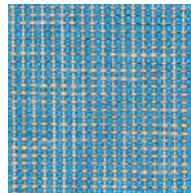
1AN01 Stone



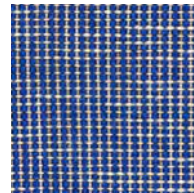
1AN02 Trench



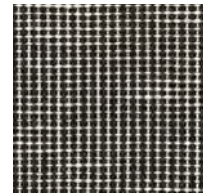
1AN03 Red



1AN04 Aqua Blue



1AN05 Sapphire



1AN06 Black

Indicates textile with limited on-hand availability. Please call your sales or
customer service representative for current stock levels and ordering options.

GEIGER

TEXTILES

Piccolo

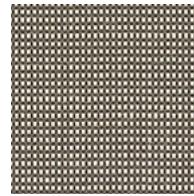
DESIGNED BY BASSAMFELLOWS

APPLICATION	Seating, Geiger Tackboards
CONTENT	39% Wool, 36% Nylon, 13% Rayon, 12% Post-Consumer Recycled Polyester
FINISH	PFOA-Free Stain Resistant
BACKING	Acrylic
WIDTH	54"
REPEAT	None
ABRASION	100,000 Cycles, Martindale*
FLAMMABILITY	CA TB 117-2013
WEIGHT	12.43 Oz Per Linear Yard
ORIGIN	United States
ENVIRONMENTAL	SCS Indoor Advantage™ Gold Contains Bio-Based Materials Contains Recycled Content FR Chemical Free Prop 65 Chemical Free
MAINTENANCE	S – Clean with Mild, Dry Cleaning Solvent
CUSTOM FINISHES	Alta; Alta Food & Beverage; Nanotex; Nanotex with Impermeable Barrier
PRICE GROUP	4
NET PRICE	\$32 per yard

*Abrasion test results exceeding
ACT Performance Guidelines are not
an indicator of product lifespan.
Multiple factors affect fabric durability
and appearance retention.



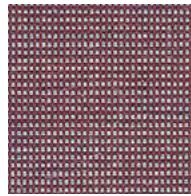
1AU01 Grey Blue



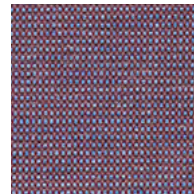
1AU02 City Night



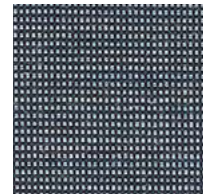
1AU03 Trench



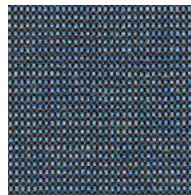
1AU04 Sangria



1AU05 Cerise



1AU06 Navy



1AU07 Lake



1AU08 Wine



1AU09 Charcoal



1AU10 Midnight
Blue

Indicates textile with limited on-hand availability. Please call your sales or
customer service representative for current stock levels and ordering options.

GEIGER

TEXTILES

Pick-Stitch Plaid

DESIGNED BY BASSAMFELLOWS

APPLICATION	Seating, Geiger Tackboards
CONTENT	38% Post-Industrial Recycled Nylon, 32% Rayon, 30% Cotton
FINISH	PFOA-Free Stain Resistant
BACKING	Acrylic
WIDTH	54"
REPEAT	13⅜" V, 13⅝" H
ABRASION	90,000 Double Rubs, Wyzenbeek*
FLAMMABILITY	CA TB 117-2013
WEIGHT	16.42 Oz Per Linear Yard
ORIGIN	United States
ENVIRONMENTAL	SCS Indoor Advantage™ Gold Contains Bio-Based Materials Contains Recycled Content FR Chemical Free Prop 65 Chemical Free
MAINTENANCE	S – Clean with Mild, Dry Cleaning Solvent
CUSTOM FINISHES	Alta; Alta Food & Beverage; Antimicrobial Stain Resistant Finish with Impermeable Barrier; Nanotex; Nanotex with Impermeable Barrier
PRICE GROUP	6
NET PRICE	\$42 Per Yard

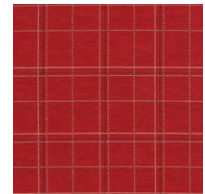
*Abrasion test results exceeding
ACT Performance Guidelines are not
an indicator of product lifespan.
Multiple factors affect fabric durability
and appearance retention.



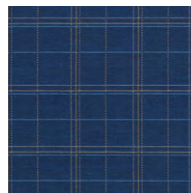
17001 Cotton



17002 Camel



17003 Red



17004 Blue



17005 Forest



17006 Bark



17007 Gray

Indicates textile with limited on-hand availability. Please call your sales or customer service representative for current stock levels and ordering options.

GEIGER

TEXTILES

Pinpoint

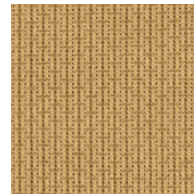
DESIGNED BY SUSAN LYONS

APPLICATION	Seating, Geiger Tackboards, Upholstered Walls
CONTENT	100% Eco-Intelligent® Polyester
WIDTH	54"
REPEAT	None
ABRASION	75,000 Double Rubs, Wyzenbeek*
FLAMMABILITY	CA TB 117-2013; ASTM E84 Unadhered, Class A 12.1 Oz Per Linear Yard
WEIGHT	Canada
ORIGIN	SCS Indoor Advantage™ Gold Facts® Gold Certified FR Chemical Free Prop 65 Chemical Free Healthier Hospitals Compliant Living Future Red List Compliant WELL Building Standard Compliant
ENVIRONMENTAL	MAINTENANCE W/S – Clean with Water-Based Cleanser, or Mild, Dry Cleaning Solvent
CUSTOM FINISHES	Acrylic Backing/PFOA-Free Stain Resistant Finish; Alta, Alta Food & Beverage; Alta Workplace ; Nanotex; Nanotex with Impermeable Barrier; PFOA-Free Stain Resistant Finish
PRICE GROUP	3
NET PRICE	\$22 Per Yard

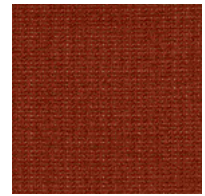
*Abrasion test results exceeding
ACT Performance Guidelines are not
an indicator of product lifespan.
Multiple factors affect fabric durability
and appearance retention.



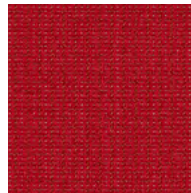
19810 Cream



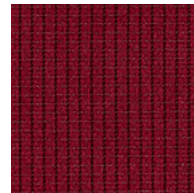
19811 Camel



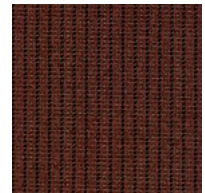
19820 Luggage



19830 Red



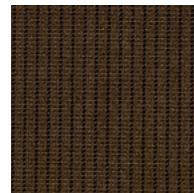
19831 Wine



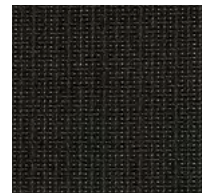
19832 Cordovan



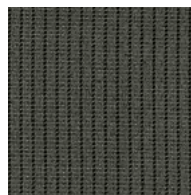
19850 Navy



19870 Trench



19880 Charcoal



19881 Grey

Indicates textile with limited on-hand availability. Please call your sales or customer service representative for current stock levels and ordering options.

GEIGER

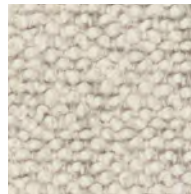
TEXTILES

Pristina

DESIGNED BY BASSAMFELLOWS

APPLICATION	Seating
CONTENT	37% Wool, 25% Viscose, 17% Acrylic, 15% Cotton, 6% Polyester
FINISH	PFOA-Free Stain Resistant
WIDTH	54"
REPEAT	None
ABRASION	85,000 Double Rubs, Wyzenbeek*
FLAMMABILITY	CA TB 117-2013
WEIGHT	35 Oz Per Linear Yard
ORIGIN	Italy
ENVIRONMENTAL	SCS Indoor Advantage™ Gold Contains Bio-Based Materials FR Chemical Free Prop 65 Chemical Free REACH Compliant
MAINTENANCE	S – Clean with Mild, Dry Cleaning Solvent
CUSTOM FINISHES	Acrylic Backing/PFOA-Free Stain Resistant Finish; Alta; Alta Food & Beverage; Alta Workplace; Nanotex; Nanotex with Impermeable Barrier
PRICE GROUP	7
NET PRICE	\$94 Per Yard

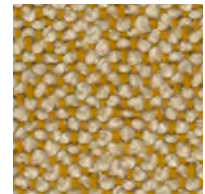
*Abrasion test results exceeding
ACT Performance Guidelines are not
an indicator of product lifespan.
Multiple factors affect fabric durability
and appearance retention.



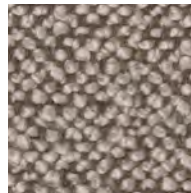
1JC01 Dove



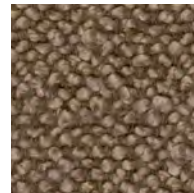
1JC02 Goldstone



1JC03 Daybreak



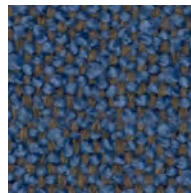
1JC04 Pumice



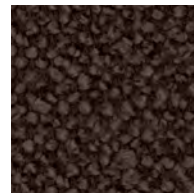
1JC05 Cappuccino



1JC06 Gunmetal



1JC07 Caspian



1JC08 Café Noir

GEIGER

TEXTILES

Renata

DESIGNED BY BASSAMFELLOWS

APPLICATION	Seating
CONTENT	46% Acrylic, 24% Cotton, 21% Viscose, 9% Polyester
FINISH	PFOA-Free Stain Resistant
WIDTH	55"
REPEAT	None
ABRASION	22,500 Double Rubs, Wyzenbeek
FLAMMABILITY	CA TB 117-2013
WEIGHT	31.3 Oz Per Linear Yard
ORIGIN	Italy
ENVIRONMENTAL	SCS Indoor Advantage™ Gold Contains Bio-Based Materials FR Chemical Free Prop 65 Chemical Free REACH Compliant
MAINTENANCE	S – Clean with Mild, Dry Cleaning Solvent
CUSTOM FINISHES	Acrylic Backing/PFOA-Free Stain Resistant Finish; Alta; Alta Food & Beverage; Alta Workplace; Nanotex; Nanotex with Impermeable Barrier
PRICE GROUP	7
NET PRICE	\$58 Per Yard



1JD01 Monochrome



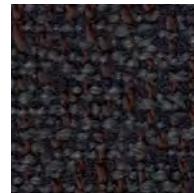
1JD02 Sepia



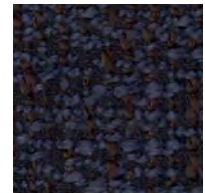
1JD03 Metal



1JD04 Smoky



1JD05 Raven



1JD06 Blue Earth

Indicates textile with limited on-hand availability. Please call your sales or customer service representative for current stock levels and ordering options.

GEIGER

TEXTILES

Resca

DESIGNED BY BASSAMFELLOWS

APPLICATION	Seating, Geiger Tackboards, Upholstered Walls†
CONTENT	75% Wool, 10% Linen, 8% Nylon, 7% Alpaca
WIDTH	56"
REPEAT	None
ABRASION	40,000 Cycles, Martindale
FLAMMABILITY	CA TB 117-2013; ASTM E84 Unadhered, Class A**
WEIGHT	20.7 Oz Per Linear Yard
ORIGIN	Italy
ENVIRONMENTAL	SCS Indoor Advantage™ Gold Contains Bio-Based Materials FR Chemical Free Prop 65 Chemical Free REACH Compliant Healthier Hospitals Compliant Living Future Red List Compliant WELL Building Standard Compliant
MAINTENANCE	S – Clean with Mild, Dry Cleaning Solvent
CUSTOM FINISHES	Acrylic Backing/PFOA-Free Stain Resistant Finish; Alta; Alta Food & Beverage; Alta Workplace; Nanotex; Nanotex with Impermeable Barrier; PFOA-Free Stain Resistant Finish; Fire Retardant (FR) Finish for Upholstered Wall Panel Use
PRICE GROUP	7
NET PRICE	\$88 Per Yard

NOTE †For upholstered wall application, due to fiber content, puddling and sagging can occur if the installation is not 24/7 climate controlled.

**Passes ASTM E84, Unadhered Class A for Upholstered Wall application with use of Fire Retardant (FR) Finish for Upholstered Wall Panel, available for upcharge.



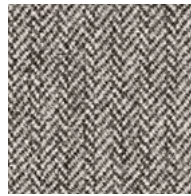
1AW01 Fog



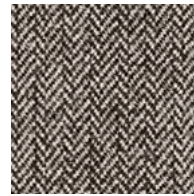
1AW02 Dune



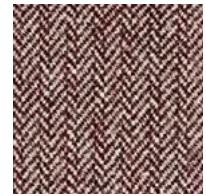
1AW03 Trench



1AW04 Flannel



1AW05 Umber



1AW06 Bordeaux

GEIGER

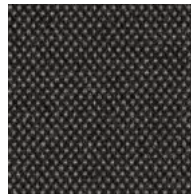
TEXTILES

Saille

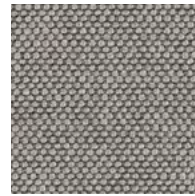
DESIGNED BY BASSAMFELLOWS

APPLICATION	Seating, Geiger Tackboards
CONTENT	69% Cotton, 31% Polyester
FINISH	PFOA-Free Stain Resistant
BACKING	Acrylic
WIDTH	57"
REPEAT	None
ABRASION	75,000 Double Rubs, Wyzenbeek*
FLAMMABILITY	CA TB 117-2013
WEIGHT	23 Oz Per Linear Yard
ORIGIN	United States
ENVIRONMENTAL	SCS Indoor Advantage™ Gold Contains Bio-Based Materials FR Chemical Free Prop 65 Chemical Free
MAINTENANCE	S – Clean with Mild, Dry Cleaning Solvent
CUSTOM FINISHES	Alta; Alta Food & Beverage; Nanotex; Nanotex with Impermeable Barrier
PRICE GROUP	3
NET PRICE	\$34 Per Yard

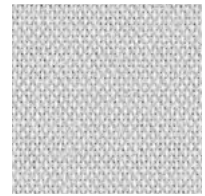
*Abrasion test results exceeding
ACT Performance Guidelines are not
an indicator of product lifespan.
Multiple factors affect fabric durability
and appearance retention.



18001 Coal



18002 Shale



18003 Haze



18004 Stone



18005 White



18006 Beach



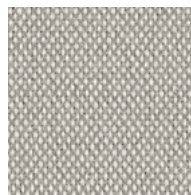
18007 Sand



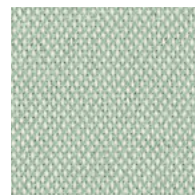
18008 Blush



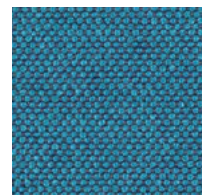
18009 Brick



18010 Fog



18011 Celadon



18012 Poolside



18013 Summer Sky



18014 Lake



18015 Midnight
Blue

GEIGER

TEXTILES

Sateen Weave

DESIGNED BY BASSAMFELLOWS

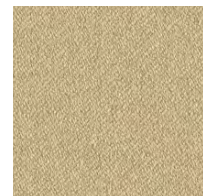
APPLICATION	Seating, Geiger Tackboards
CONTENT	92% Wool, 8% Nylon
WIDTH	54"
REPEAT	None
ABRASION	40,000 Cycles, Martindale
FLAMMABILITY	CA TB 117-2013
WEIGHT	17 Oz Per Linear Yard
ORIGIN	Great Britain
ENVIRONMENTAL	SCS Indoor Advantage™ Gold Contains Bio-Based Materials FR Chemical Free Prop 65 Chemical Free Healthier Hospitals Compliant Living Future Red List Compliant WELL Building Standard Compliant
MAINTENANCE	S – Clean with Mild, Dry Cleaning Solvent
CUSTOM FINISHES	Acrylic Backing/PFOA-Free Stain Resistant Finish; Alta; Alta Food & Beverage; Alta Workplace; Antimicrobial Stain Resistant Finish with Impermeable Barrier; Nanotex; Nanotex with Impermeable Barrier; PFOA-Free Stain Resistant Finish
PRICE GROUP	7
NET PRICE	\$60 Per Yard



16301 Bright Red



16302 Cognac Brown



16303 Pale Chestnut Brown



16304 Pale Native Umber



16305 Light Native Umber



16306 Sahara Sand Deep



16307 Light Blue



16308 Deep Cerulean Blue



16310 Black Green



16311 Deep Native Umber



16312 Chestnut Brown



16313 Natural Native Umber

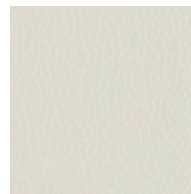
Indicates textile with limited on-hand availability. Please call your sales or customer service representative for current stock levels and ordering options.

GEIGER

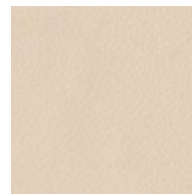
TEXTILES

Semplice

APPLICATION	Seating
CONTENT	European Top Grain, Semi-Aniline Dyed Cowhide, Embossed
TANNING	Chrome-free, Synthetic Vegetable
FINISH	Water-Based Color Pigmented Protective Topcoat
AVERAGE HIDE	50-55 Square Feet
FLAMMABILITY	CA TB 117-2013
WEIGHT	2.75 Oz Per Square Foot
THICKNESS	1.1 mm +/- .1 mm
ORIGIN	Austria
ENVIRONMENTAL	SCS Indoor Advantage™ Gold FR Chemical Free Heavy Metal Free Prop 65 Chemical Free OEKO-TEX® Certified REACH Compliant Healthier Hospitals Compliant Living Future Red List Compliant WELL Building Standard Compliant
PRICE GROUP	8
NET PRICE	\$8 Per Square Foot



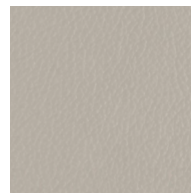
1SE01 Alabaster



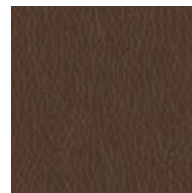
1SE02 Stone



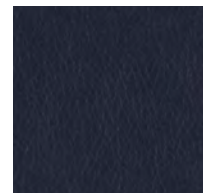
1SE03 Parchment



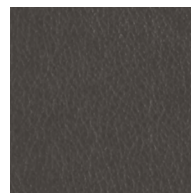
1SE04 Titanium



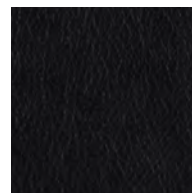
1SE05 Dark Brown



1SE06 Prussian Blue



1SE07 Charcoal



1SE08 Black

Indicates textile with limited on-hand availability. Please call your sales or customer service representative for current stock levels and ordering options.

GEIGER

TEXTILES

Sommar

DESIGNED BY BASSAMFELLOWS

APPLICATION	Seating, Geiger Tackboards
CONTENT	62% Cotton, 24% Polyester, 14% Acrylic
FINISH	PFOA-Free Stain Resistant
WIDTH	55"
REPEAT	None
ABRASION	30,000 Cycles, Martindale
FLAMMABILITY	CA TB 117-2013
WEIGHT	22.27 Oz Per Linear Yard
ORIGIN	Italy
ENVIRONMENTAL	SCS Indoor Advantage™ Gold Contains Bio-Based Materials FR Chemical Free Prop 65 Chemical Free REACH Compliant
MAINTENANCE	S – Clean with Mild, Dry Cleaning Solvent
CUSTOM FINISHES	Acrylic Backing/PFOA-Free Stain Resistant Finish; Alta; Alta Food & Beverage; Alta Workplace; Nanotex; Nanotex with Impermeable Barrier
PRICE GROUP	6
NET PRICE	\$44 Per Yard



1AJ01 Cloud



1AJ02 Natural



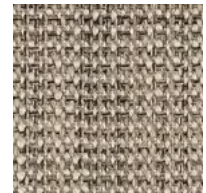
1AJ03 Light Silver



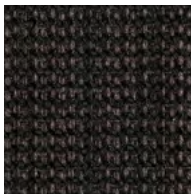
1AJ04 Oxford



1AJ05 Sweet Tea



1AJ06 Amber



1AJ08 Dark Roast

Indicates textile with limited on-hand availability. Please call your sales or customer service representative for current stock levels and ordering options.

GEIGER

TEXTILES

Staple

DESIGNED BY BASSAMFELLOWS

APPLICATION	Seating
CONTENT	100% Wool
BACKING	Cotton
WIDTH	54"
REPEAT	None
ABRASION	250,000 Cycles, Martindale*
FLAMMABILITY	CA TB 117-2013
WEIGHT	21.7 Oz Per Linear Yard
ORIGIN	Belgium
ENVIRONMENTAL	SCS Indoor Advantage™ Gold Contains Bio-Based Materials FR Chemical Free Prop 65 Chemical Free Healthier Hospitals Compliant Living Future Red List Compliant WELL Building Standard Compliant
MAINTENANCE	S – Clean with Mild, Dry Cleaning Solvent
CUSTOM FINISHES	Alta™ Plush; PFOA-Free Stain Resistant Finish
PRICE GROUP	8
NET PRICE	\$84 Per Yard

*Abrasion test results exceeding
ACT Performance Guidelines are not
an indicator of product lifespan.
Multiple factors affect fabric durability
and appearance retention.



16101 Light
Native Umber



16102 Medium
Native Umber



16103 Pearl Gray



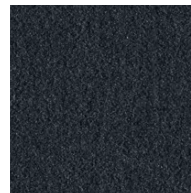
16104 Light Gray



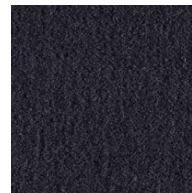
16105 Ferric Gray



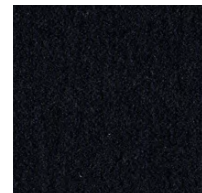
16106 Black Green



16107 Prussian Blue



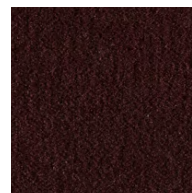
16108 Navy



16109 Burnt Umber



16110 Chestnut
Brown



16111 Ruby Red

Indicates textile with limited on-hand availability. Please call your sales or customer service representative for current stock levels and ordering options.

GEIGER

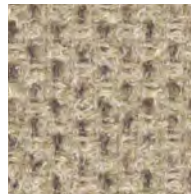
TEXTILES

Starlet

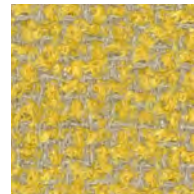
DESIGNED BY BASSAMFELLOWS

APPLICATION	Seating
CONTENT	47% Cotton, 33% Viscose, 16% Polyester, 4% Linen
BACKING	Resin
WIDTH	55"
REPEAT	None
ABRASION	100,000 Double Rubs, Wyzenbeek*
FLAMMABILITY	CA TB 117-2013
WEIGHT	33.83 Oz Per Linear Yard
ORIGIN	Italy
ENVIRONMENTAL	SCS Indoor Advantage™ Gold Contains Bio-Based Materials REACH Compliant
MAINTENANCE	S – Clean with Mild, Dry Cleaning Solvent
CUSTOM FINISHES	Alta; Alta Food & Beverage; Nanotex
PRICE GROUP	8
NET PRICE	\$92 Per Yard

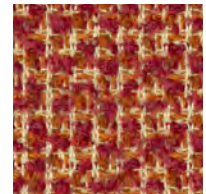
*Abrasion test results exceeding
ACT Performance Guidelines are not
an indicator of product lifespan.
Multiple factors affect fabric durability
and appearance retention.



1GK01 Stone



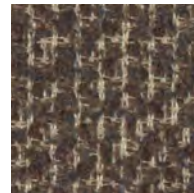
1GK02 Lemon



1GK03 Sunset



1GK04 Celadon



1GK05 Dusk



1GK06 Navy



1GK07 Shale

Indicates textile with limited on-hand availability. Please call your sales or customer service representative for current stock levels and ordering options.

GEIGER

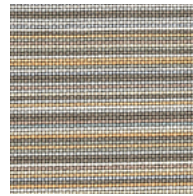
TEXTILES

Striae

DESIGNED BY SUSAN LYONS

APPLICATION	Seating
CONTENT	62% Polyester, 38% Nylon
FINISH	PFOA-Free Stain Resistant
BACKING	Acrylic
WIDTH	53"
REPEAT	4¾" V
ABRASION	100,000 Double Rubs, Wyzenbeek*
FLAMMABILITY	CA TB 117-2013
WEIGHT	18.3 Oz Per Linear Yard
ORIGIN	United States
ENVIRONMENTAL	SCS Indoor Advantage™ Gold FR Chemical Free Prop 65 Chemical Free
MAINTENANCE	W/S – Clean with Water-Based Cleanser, or Mild, Dry Cleaning Solvent; Bleach Cleanable – Clean with 10:1 Water to Household Bleach
CUSTOM FINISHES	Alta; Alta Food & Beverage; Nanotex; Nanotex with Impermeable Barrier
PRICE GROUP	5
NET PRICE	\$38 Per Yard
NOTE	Bleach Cleanable

*Abrasion test results exceeding
ACT Performance Guidelines are not
an indicator of product lifespan.
Multiple factors affect fabric durability
and appearance retention.



19910 Neutral



19911 Camel Java



19991 Navy



19993 Java Copper



19994 Bright

Indicates textile with limited on-hand availability. Please call your sales or
customer service representative for current stock levels and ordering options.

GEIGER

TEXTILES

Striscia

DESIGNED BY BASSAMFELLOWS

APPLICATION	Seating
CONTENT	73% Wool, 24% Rayon, 3% Nylon
FINISH	PFOA-Free Stain Resistant
BACKING	Acrylic
WIDTH	53"
REPEAT	13" H
ABRASION	100,000 Cycles, Martindale*
FLAMMABILITY	CA TB 117-2013
WEIGHT	27.4 Oz Per Linear Yard
ORIGIN	United States
ENVIRONMENTAL	SCS Indoor Advantage™ Gold Contains Bio-Based Materials FR Chemical Free Prop 65 Chemical Free
MAINTENANCE	S – Clean with Mild, Dry Cleaning Solvent
CUSTOM FINISHES	Alta; Alta Food & Beverage; Nanotex; Nanotex with Impermeable Barrier
PRICE GROUP	8
NET PRICE	\$68 Per Yard

*Abrasion test results exceeding
ACT Performance Guidelines are not
an indicator of product lifespan.
Multiple factors affect fabric durability
and appearance retention.



1AY01 Mojave



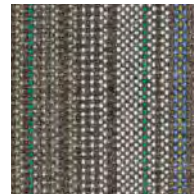
1AY02 Cheyenne



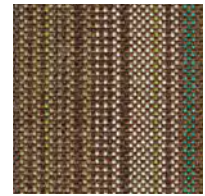
1AY03 Sante Fe



1AY04 Zion



1AY05 Portland



1AY06 Everglade



1AY07 Sierra



1AY08 Huron

Indicates textile with limited on-hand availability. Please call your sales or customer service representative for current stock levels and ordering options.

GEIGER

TEXTILES

Tattersall Reverse

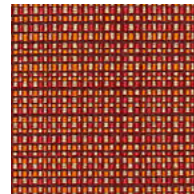
DESIGNED BY SUSAN LYONS

APPLICATION	Seating
CONTENT	35% Cotton, 29% Polyester, 27% Nylon, 9% Post-Consumer Recycled Polyester
FINISH	GreenShield
BACKING	Acrylic
WIDTH	54"
REPEAT	9" V, 16" H
ABRASION	100,000 Double Rubs, Wyzenbeek*
FLAMMABILITY	CA TB 117-2013
WEIGHT	18.3 Oz Per Linear Yard
ORIGIN	United States
ENVIRONMENTAL	SCS Indoor Advantage™ Gold Contains Bio-Based Materials Contains Recycled Content FR Chemical Free Prop 65 Chemical Free
MAINTENANCE	S – Clean with Mild, Dry Cleaning Solvent
CUSTOM FINISHES	Alta; Alta Food & Beverage; Nanotex; Nanotex with Impermeable Barrier
PRICE GROUP	6
NET PRICE	\$44 Per Yard

*Abrasion test results exceeding
ACT Performance Guidelines are not
an indicator of product lifespan.
Multiple factors affect fabric durability
and appearance retention.



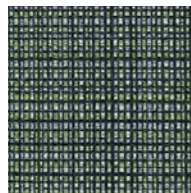
20010 Saddle



20030 Red



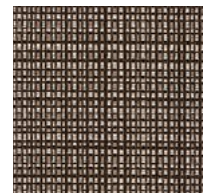
20050 Navy



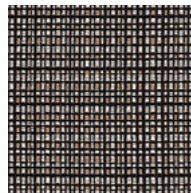
20060 Willow



20070 Trench



20071 Latte Umber



20080 Flannel
Umber

Indicates textile with limited on-hand availability. Please call your sales or
customer service representative for current stock levels and ordering options.

GEIGER

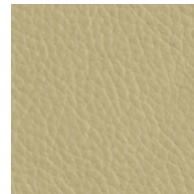
TEXTILES

Tenera

APPLICATION	Seating
CONTENT	European Full Grain Semi-Aniline Dyed Cowhide, Enhanced for Uniform Grain
TANNING	Chrome-Free, Synthetic Vegetable
FINISH	Breathable Water-Based Protective Topcoat
AVERAGE HIDE	50-55 Square Feet
FLAMMABILITY	CA TB 117-2013
WEIGHT	3.5 Oz Per Square Foot
THICKNESS	1.5 mm +/- .1 mm
ORIGIN	Austria
ENVIRONMENTAL	SCS Indoor Advantage™ Gold FR Chemical Free Heavy Metal Free Prop 65 Chemical Free OEKO-TEX® Certified REACH Compliant Healthier Hospitals Compliant Living Future Red List Compliant WELL Building Standard Compliant
PRICE GROUP	11
NET PRICE	\$13 Per Square Foot



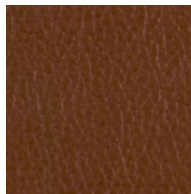
17501 Cement



17502 Marzipan



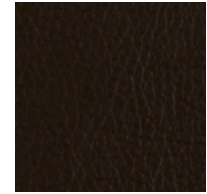
17504 Raw Sienna



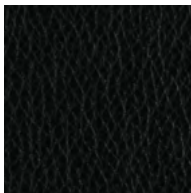
17505 Maple



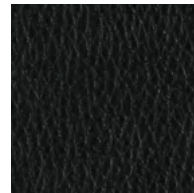
17508 Cranberry



17510 Dark
Chocolate



17511 Black



17512 Carbon



17513 Sapphire

GEIGER

TEXTILES

Tenon

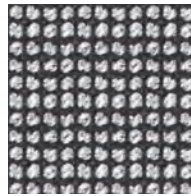
DESIGNED BY BASSAMFELLOWS

APPLICATION	Seating, Geiger Tackboards
CONTENT	63% Acrylic, 37% Polyester
WIDTH	56"
REPEAT	None
ABRASION	95,000 Double Rubs, Wyzenbeek*
FLAMMABILITY	CA TB 117-2013
WEIGHT	19.8 Oz Per Linear Yard
ORIGIN	Germany
ENVIRONMENTAL	SCS Indoor Advantage™ Gold FR Chemical Free Prop 65 Chemical Free OEKO-TEX® Certified Yarns REACH Compliant Healthier Hospitals Compliant Living Future Red List Compliant WELL Building Standard Compliant
MAINTENANCE	W/S – Clean with Water-Based Cleanser, or Mild, Dry Cleaning Solvent; Bleach Cleanable – Clean with 10:1 Water to Household Bleach
CUSTOM FINISHES	Alta; Alta Food & Beverage; Alta Workplace; Nanotex; Nanotex; Nanotex with Impermeable Barrier; PFOA-Free Stain Resistant Finish
PRICE GROUP	5
NET PRICE	\$34 Per Yard
NOTE	Bleach Cleanable

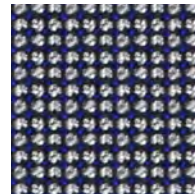
*Abrasion test results exceeding
ACT Performance Guidelines are not
an indicator of product lifespan.
Multiple factors affect fabric durability
and appearance retention.



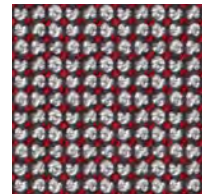
Indicates textile with limited on-hand availability. Please call your sales or customer service representative for current stock levels and ordering options.



1DE01 Charcoal



1DE02 Royal



1DE03 Garnet

GEIGER

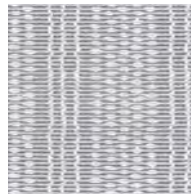
TEXTILES

Toluca Ikat

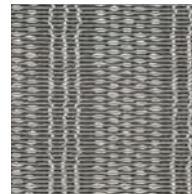
DESIGNED BY BASSAMFELLOWS

APPLICATION	Seating
CONTENT	65% Sunbrella® Solution Dyed Acrylic, 35% Sunbrella® Solution Dyed Polyester
FINISH	PFOA-Free Stain Resistant
WIDTH	54"
REPEAT	4 ½" V, 28 ½" H
ABRASION	100,000 Double Rubs, Wyzenbeek*
FLAMMABILITY	CA TB 117-2013
WEIGHT	15.65 Oz Per Linear Yard
ORIGIN	United States
ENVIRONMENTAL	SCS Indoor Advantage™ Gold Facts® Silver Certified FR Chemical Free OEKO-TEX® Certified Prop 65 Chemical Free REACH Compliant Solution-Dyed
MAINTENANCE	W/S – Clean with Water-Based Cleanser, or Mild, Dry Cleaning Solvent; Bleach Cleanable – Clean with 10:1 Water to Household Bleach
CUSTOM FINISHES	Acrylic Backing/PFOA-Free Stain Resistant Finish; Alta; Alta Food & Beverage; Alta Workplace; Nanotex; Nanotex with Impermeable Barrier
PRICE GROUP	6
NET PRICE	\$42 Per Yard
NOTE	Bleach Cleanable, Indoor/Outdoor

*Abrasion test results exceeding
ACT Performance Guidelines are not
an indicator of product lifespan.
Multiple factors affect fabric durability
and appearance retention.



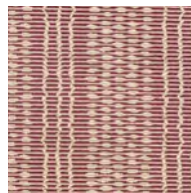
1DJ01 Sky



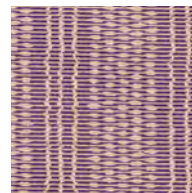
1DJ02 Gris



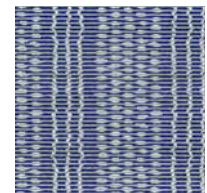
1DJ03 Playa



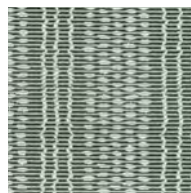
1DJ04 Pomegranate



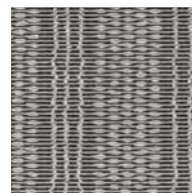
1DJ05 Lila



1DJ06 Azul



1DJ07 Avocado



1DJ08 Obscura

Indicates textile with limited on-hand availability. Please call your sales or
customer service representative for current stock levels and ordering options.

GEIGER

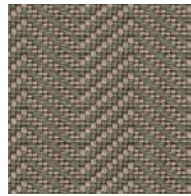
TEXTILES

True Herringbone

DESIGNED BY BASSAMFELLOWS

APPLICATION	Seating
CONTENT	49% Rayon, 48% Post-Consumer Recycled Polyester, 3% Nylon
FINISH	PFOA-Free Stain Resistant
BACKING	Acrylic
WIDTH	53"
REPEAT	¼" V, 1¼" H
ABRASION	100,000 Double Rubs, Wyzenbeek*
FLAMMABILITY	CA TB 117-2013
WEIGHT	26.2 Oz Per Linear Yard
ORIGIN	United States
ENVIRONMENTAL	SCS Indoor Advantage™ Gold Contains Recycled Content FR Chemical Free Prop 65 Chemical Free
MAINTENANCE	S – Clean with Mild, Dry Cleaning Solvent
CUSTOM FINISHES	Alta; Alta Food & Beverage; Nanotex; Nanotex with Impermeable Barrier
PRICE GROUP	7
NET PRICE	\$56 Per Yard

*Abrasion test results exceeding ACT Performance Guidelines are not an indicator of product lifespan. Multiple factors affect fabric durability and appearance retention.



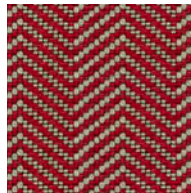
22401 Olivine



22402 Camel



22403 Earthen



22405 Vermilion



22407 Bordeaux



22408 Prussian Blue



22409 Dark Sienna

Indicates textile with limited on-hand availability. Please call your sales or customer service representative for current stock levels and ordering options.

GEIGER

TEXTILES

Twill Plaid

DESIGNED BY BASSAMFELLOWS

APPLICATION	Seating, Geiger Tackboards, Upholstered Walls
CONTENT	70% Post-Consumer Recycled Polyester, 27% Wool, 3% Nylon
FINISH	PFOA-Free Stain Resistant
BACKING	Acrylic
WIDTH	53"
REPEAT	13" V, 12 3/4" H
ABRASION	100,000 Double Rubs, Wyzenbeek*
FLAMMABILITY	CA TB 117-2013; ASTM E84 Unadhered, Class A
WEIGHT	18 Oz Per Linear Yard
ORIGIN	United States
ENVIRONMENTAL	SCS Indoor Advantage™ Gold Contains Bio-Based Materials Contains Recycled Content FR Chemical Free Prop 65 Chemical Free
MAINTENANCE	S – Clean with Mild, Dry Cleaning Solvent
CUSTOM FINISHES	Alta; Alta Food & Beverage; Nanotex; Nanotex with Impermeable Barrier
PRICE GROUP	7
NET PRICE	\$57 Per Yard

*Abrasion test results exceeding
ACT Performance Guidelines are not
an indicator of product lifespan.
Multiple factors affect fabric durability
and appearance retention.



16901 Cream



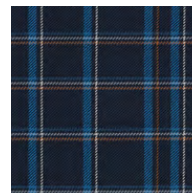
16902 Fog



16903 Orange



16904 Natier Blue



16905 Blue



16906 Forest

Indicates textile with limited on-hand availability. Please call your sales or
customer service representative for current stock levels and ordering options.

GEIGER

TEXTILES

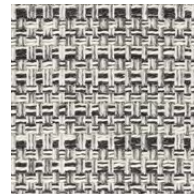
Vavare

DESIGNED BY BASSAMFELLOWS

APPLICATION	Seating, Geiger Tackboards
CONTENT	50% Post-Industrial Recycled Cotton, 28% Cotton, 13% Polyester, 9% Acrylic
FINISH	PFOA-Free Stain Resistant
BACKING	Acrylic
WIDTH	54"
REPEAT	2" V; Suitable for Non-Match
ABRASION	50,000 Double Rubs, Wyzenbeek*
FLAMMABILITY	CA TB 117-2013
WEIGHT	32.78 Oz Per Linear Yard
ORIGIN	United States
ENVIRONMENTAL	SCS Indoor Advantage™ Gold Contains Bio-Based Materials Contains Recycled Content FR Chemical Free Prop 65 Chemical Free
MAINTENANCE	S – Clean with Mild, Dry Cleaning Solvent
CUSTOM FINISHES	Alta; Alta Food & Beverage; Nanotex; Nanotex with Impermeable Barrier
PRICE GROUP	5
NET PRICE	\$44 Per Yard



17402 Sandstone



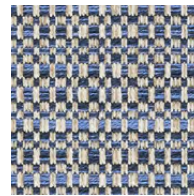
17403 Monochrome



17404 Shadow



17406 Lakeside



17407 Midsummer

*Abrasion test results exceeding
ACT Performance Guidelines are not
an indicator of product lifespan.
Multiple factors affect fabric durability
and appearance retention.



Indicates textile with limited on-hand availability. Please call your sales or customer service representative for current stock levels and ordering options.

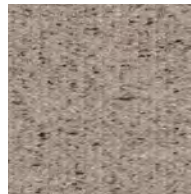
GEIGER

TEXTILES

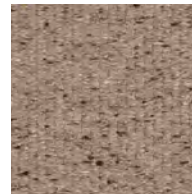
Vesture

DESIGNED BY BASSAMFELLOWS

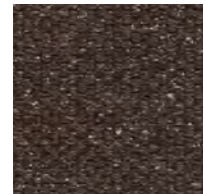
APPLICATION	Seating, Geiger Tackboards
CONTENT	40% Wool, 25% Polyester, 20% Silk, 15% Nylon
FINISH	PFOA-Free Stain Resistant
WIDTH	55"
REPEAT	None
ABRASION	50,000 Double Rubs, Wyzenbeek*
FLAMMABILITY	CA TB 117-2013
WEIGHT	19.4 Oz Per Linear Yard
ORIGIN	Italy
ENVIRONMENTAL	SCS Indoor Advantage™ Gold Contains Bio-Based Materials FR Chemical Free Prop 65 Chemical Free
MAINTENANCE	S – Clean with Mild, Dry Cleaning Solvent
CUSTOM FINISHES	Acrylic Backing/PFOA-Free Stain Resistant Finish; Alta; Alta Food & Beverage; Alta Workplace; Nanotex; Nanotex with Impermeable Barrier
PRICE GROUP	7
NET PRICE	\$82 Per Yard



21701 Ashen



21702 Dark Blush



21703 Dusk



21704 Medium Gray



21705 Twilight

*Abrasion test results exceeding
ACT Performance Guidelines are not
an indicator of product lifespan.
Multiple factors affect fabric durability
and appearance retention.



GEIGER

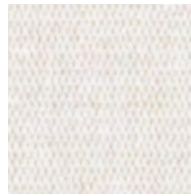
TEXTILES

Vionette

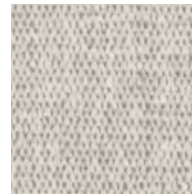
DESIGNED BY BASSAMFELLOWS

APPLICATION	Seating, Geiger Tackboards, Upholstered Walls
CONTENT	100% Polyester
WIDTH	55"
REPEAT	None
ABRASION	80,000 Double Rubs, Wyzenbeek*
FLAMMABILITY	CA TB 117-2013; ASTM E84 Unadhered, Class A
WEIGHT	22.3 Oz Per Linear Yard
ORIGIN	Italy
ENVIRONMENTAL	SCS Indoor Advantage™ Gold FR Chemical Free Prop 65 Chemical Free REACH Compliant Healthier Hospitals Compliant Living Future Red List Compliant WELL Building Standard Compliant
MAINTENANCE	S – Clean with Mild, Dry Cleaning Solvent
CUSTOM FINISHES	Acrylic Backing/PFOA-Free Stain Resistant Finish; Alta; Alta Food & Beverage; Alta Workplace; Nanotex; Nanotex with Impermeable Barrier; PFOA-Free Stain Resistant Finish
PRICE GROUP	5
NET PRICE	\$58 Per Yard

*Abrasion test results exceeding ACT Performance Guidelines are not an indicator of product lifespan. Multiple factors affect fabric durability and appearance retention.



1GJ01 White Sand Mix



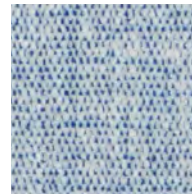
1GJ02 Desert Mix



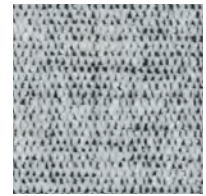
1GJ03 Light Gray Mix



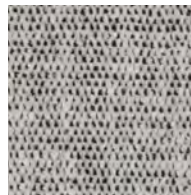
1GJ04 Pewter Mix



1GJ05 Cobalt Mix



1GJ06 Prussian Blue Mix



1GJ07 Chocolate Mix



1GJ08 Champagne



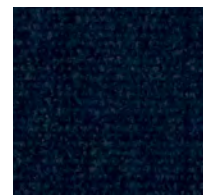
1GJ09 Morning Sky



1GJ10 Aquatic



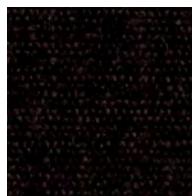
1GJ11 Sapphire



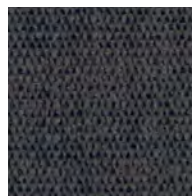
1GJ12 Midnight Blue



1GJ13 Shadow



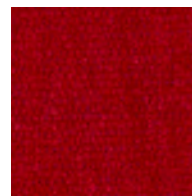
1GJ14 Java



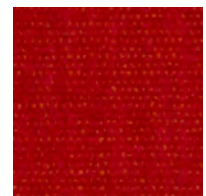
1GJ15 Carbon



1GJ16 Black



1GJ17 Claret



1GJ18 Poppy

GEIGER

TEXTILES

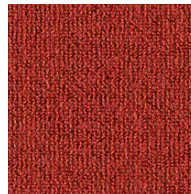
Wool Epingle

DESIGNED BY BASSAMFELLOWS

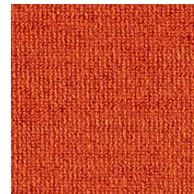
APPLICATION	Seating
CONTENT	100% Wool
BACKING	Cotton
WIDTH	54"
REPEAT	None
ABRASION	65,000 Cycles, Martindale*
FLAMMABILITY	CA TB 117-2013
WEIGHT	22.1 Oz Per Linear Yard
ORIGIN	Belgium
ENVIRONMENTAL	SCS Indoor Advantage™ Gold Contains Bio-Based Materials FR Chemical Free Prop 65 Chemical Free Healthier Hospitals Compliant Living Future Red List Compliant WELL Building Standard Compliant
MAINTENANCE	S – Clean with Mild, Dry Cleaning Solvent
CUSTOM FINISHES	PFOA-Free Stain Resistant Finish
PRICE GROUP	7
NET PRICE	\$107 Per Yard

NOTE
Subtle Shade Variation is
a Natural Effect

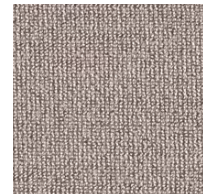
*Abrasion test results exceeding
ACT Performance Guidelines are not
an indicator of product lifespan.
Multiple factors affect fabric durability
and appearance retention.



16201 Swiss Red



16202 Orange



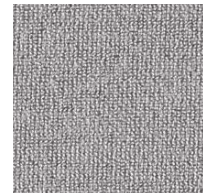
16203 Light Chestnut
Brown



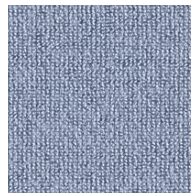
16204 Light Burnt
Umber



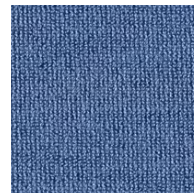
16205 Pale Native
Umber



16207 Gray



16208 Natier Blue



16209 Deep
Cerulean Blue



16210 Anthracite



16211 Natural
Native Umber



16212 Chestnut
Brown

GEIGER

TEXTILES

Wool Tweed

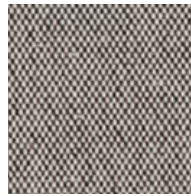
DESIGNED BY BASSAMFELLOWS

APPLICATION	Seating, Geiger Tackboards, Upholstered Walls†
CONTENT	80% Wool, 20% Nylon
WIDTH	54"
REPEAT	None
ABRASION	70,000 Cycles, Martindale*
FLAMMABILITY	CA TB 117-2013; ASTM E84 Unadhered, Class B**
WEIGHT	21.6 Oz Per Linear Yard
ORIGIN	New Zealand
ENVIRONMENTAL	SCS Indoor Advantage™ Gold Contains Bio-Based Materials FR Chemical Free Prop 65 Chemical Free Healthier Hospitals Compliant Living Future Red List Compliant WELL Building Standard Compliant
MAINTENANCE	S – Clean with Mild, Dry Cleaning Solvent
CUSTOM FINISHES	Acrylic Backing/PFOA-Free Stain Resistant Finish; Alta; Alta Food & Beverage; Alta Workplace; Antimicrobial Stain Resistant Finish with Impermeable Barrier; Nanotex; Nanotex with Impermeable Barrier; PFOA-Free Stain Resistant Finish; Fire Retardant (FR) Finish for Upholstered Wall Panel Use
PRICE GROUP	7
NET PRICE	\$96 Per Yard

NOTE †For upholstered wall application, due to fiber content, puddling and sagging can occur if the installation is not 24/7 climate controlled.

*Abrasion test results exceeding ACT Performance Guidelines are not an indicator of product lifespan. Multiple factors affect fabric durability and appearance retention.

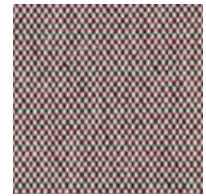
**Passes ASTM E84, Unadhered Class B for Upholstered Wall application with use of Fire Retardant (FR) Finish for Upholstered Wall Panel, available for upcharge.



16601 Trench



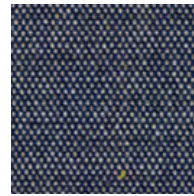
16602 Pewter



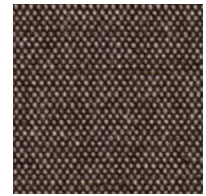
16603 Ruby



16604 Blue Gray



16605 Navy



16606 Umber



16607 Charcoal

Geiger Textiles Price Groups

PRICE GROUP 2

Canon
Even

PRICE GROUP 3

Cambrai
Mini Plaid
Pinpoint
Saille

PRICE GROUP 4

Antico
Braid
EcoHide Classic
Fringe
Granno
Irregular Grid
Kalista
Micro Houndstooth
Novello
Ottoman
Piccolo

PRICE GROUP 5

Boucle
Button-Up
Cheswick
Claremont
Dapper
Envie
Essential Twill
Harlow
Herringbone
Houndstooth Check
Ingénue
Iota
Iron Cloth
Lona del Sol
Lucio
Striae
Tenon
Vavare
Vionette

PRICE GROUP 6

Classic Velvet
Gridwork
Matiz
Overture
Pick-Stitch Plaid
Sommar
Tattersall Reverse
Toluca Ikat

PRICE GROUP 7

Amenia
Bellano
Capri
Dorset
Double Beam Redux
Epingle
Graphton
Milaner
Panno di Dolce
Pantile
Pristina
Renata
Resca
Sateen Weave
True Herringbone
Twill Plaid
Vesture
Wool Epingle
Wool Tweed

PRICE GROUP 8

Allusion
Basketweave
Foothills
Semplice
Staple
Starlet
Striscia

PRICE GROUP 9

Alpaca Mohair
Cordé Stripe

PRICE GROUP 10

Bristol Leather

PRICE GROUP 11

Tenera Leather

Indicates textile with limited on-hand availability. Please call your sales or customer service representative for current stock levels and ordering options.

Custom Finishes

Geiger Textiles can apply additional special finishes and backings for an additional charge. Please allow 2-3 weeks for processing. All orders should be placed with an additional .5 yards or 2% overage (whichever is greater) per colorway per roll to accommodate for shrinkage. Geiger Textiles is not responsible for orders received without the proper yardage allowance as outlined. All custom finish orders are non-cancelable, and processed yardage is non-returnable.

ACRYLIC BACKING/PFOA-FREE STAIN RESISTANT FINISH

Acrylic backing provides a barrier to prevent adhesive bleed through, improves the ease of textile handling for furniture manufacturers and eliminates textile fraying. To apply acrylic backing, all textiles must be treated with an additional stain resistant treatment to protect the face of the textile during finishing. The price listed reflects both processes. 5 yard minimum.

5-25 Yards	\$130 Flat Fee
26+ Yards	\$5.00 Per Yard

ALTA™

Alta is the latest generation of water-based performance technology that provides repellency to water and oil-based stains, soil, and spills, giving the fabric exceptional cleanability. 2 yard minimum.

2-83 Yards	\$240 Flat Fee
84+ Yards	\$2.90 Per Yard

ALTA™ FOOD & BEVERAGE

Combines the Alta performance technology with an impermeable barrier, preventing liquids from penetrating the fabric. 2 yard minimum.

2-47 Yards	\$300 Flat Fee
48+ Yards	\$6.25 Per Yard

ALTA™ PLUSH

This Alta performance technology is designed specifically to maintain the integrity of velvet and plush fabrics. 2 yard minimum.

2-38 Yards	\$230 Flat Fee
39+ Yards	\$6.00 Per Yard

ALTA™ WORKPLACE

Combines the Alta performance technology with an acrylic backing making it easier to upholster the textiles. 2 yard minimum.

2-62 Yards	\$260 Flat Fee
63+ Yards	\$4.20 Per Yard

ANTI-MICROBIAL STAIN RESISTANT FINISH WITH IMPERMEABLE BARRIER

A combination high performance finish using fluorocarbon-based stain-resistant chemistry and antimicrobial agent, and a waterproof, breathable moisture barrier. This finish helps prevent the growth of microorganisms and aids in stain resistance and moisture absorption. 10 yard minimum.

10-24 Yards	\$200 Flat Fee
25+ Yards	\$8.50 Per Yard

FIRE RETARDANT (FR) FINISH FOR UPHOLSTERED WALL PANEL USE

Non-toxic chemical flame retardant applied to maintain integrity of the fabric. 5 yard minimum.

5-20 Yards	\$240 Flat Fee
21+ Yards	\$12 Per Yard

NANOTEX®

Nanotex is the contract industry's first high-performance finish using nanotechnology to offer permanent spill and stain resistance, by covalently bonding to the fiber of the fabric. 25 yard minimum.

25-50 Yards	\$200 Flat Fee
51+ Yards	\$4.00 Per Yard

NANOTEX® WITH IMPERMEABLE BARRIER

Nanotex® with Impermeable Barrier pairs the stain resistant finish, Nanotex®, with an impermeable barrier, preventing liquid and other spills to penetrate the fabric. 25 yard minimum.

25-50 Yards	\$205 Flat Fee
51+ Yards	\$8.20 Per Yard

PFOA-FREE STAIN RESISTANT FINISH

An applied finish with a fluorocarbon-based stain-resistant chemistry manufactured without perfluorooctanoic acid (PFOA) which helps to repel liquid spills and stains. 5 yard minimum.

5+ Yards	\$3.50 Per Yard
----------	-----------------

Warranty

Unless otherwise stated, Geiger Textiles meet or exceed Association for Contract Textiles (ACT) quality and performance standards. Additional fabric finishes applied after purchase will void any Geiger Textiles warranty.

Geiger guarantees that Geiger Textiles will perform in accordance with accepted industry standards when used under normal conditions, during single shift operation, with proper maintenance and for the purpose intended:

- For a period of three years from date of purchase for upholstery products that meet all general contract textile requirements in accordance with ACT standards.
- The following high performance textiles are covered under a Geiger Textiles five-year warranty: Antico, Braid, Canon, Cheswick, EcoHide Classic, Even, Gridwork, Fringe, Granno, Houndstooth Check, Lona del Sol, Lucio, Matiz, Novello, Toluca Ikat, and Vaquero.
- No warranty is given for any other products.

Geiger Textiles warranty will be limited to the refund of the purchase price or replacement of the fabric with a mutually agreed upon replacement, and does not include any labor costs. This warranty does not cover: (a) installation contrary to Geiger Textiles installation guidelines or proper installation practices; (b) damage caused by mold or mildew; (c) reverse crocking; (d) improper use; (e) improper maintenance; (f) improper storage or handling; (g) use of incompatible or unspecified adhesive, materials, tools or equipment; (h) inadequacies or defects in building design or constructions; and (i) any other damage or problem due to external causes unrelated to any Geiger Textiles product defect.

This warranty is non-transferable and non-assignable.

Warranty-related claims must be submitted in writing to Geiger within above stated warranty period from date of invoice.

WARRANTY DISCLAIMERS

The above express warranties are the exclusive warranties given by Geiger Textiles. All other warranties, express or implied, are expressly disclaimed, including without limitation as to merchantability, fitness for any particular purpose or use or otherwise.

Additional Information

SAMPLES

Samples of Geiger Textiles and leathers are available upon request. Please contact your sales representative or call 800.456.6452 to request samples.

RESERVES

Based on availability, Geiger Textiles will reserve specific quantities of textiles or leathers for a 10-day period.

ORDER INFORMATION

All textiles are sold to the nearest one-quarter yard, with a two yard minimum per colorway. A \$20 charge applies to orders under the minimum. Specify number, pattern name, and color. Leather is sold to the nearest one-half hide. One complete hide is approximately 55 square feet. Specify number and color.

Orders may be sent via email or fax at 404-836-7519. For assistance with this process, please contact Geiger Customer Care at 800-456-6452. Herman Miller dealers must submit all purchase orders to Geiger via Omni.

Midwest
custcaremw@geigerfurniture.com

Northeast
custcarene@geigerfurniture.com

New York
custcareny@geigerfurniture.com

South
custcaresouth@geigerfurniture.com

West
custcarewest@geigerfurniture.com

International
custcareintl@geigerfurniture.com

FREIGHT

For textile and leather orders, the actual freight charges will be invoiced. Orders are shipped via ground carrier unless requested otherwise. All textile shipments will be made FOB. Geiger Textiles, Yaphank, NY 11980. All leather shipments will be made FOB. Geiger Textiles, Hildebran, NC 28637.

TAXES

Customer is responsible for any applicable sales taxes charged based on destination of the product.

RETURNS

Materials may not be returned without written approval from Geiger Textiles, and Geiger Textiles will not accept for return any textile piece less than 10 yards long nor any piece that is not in excellent condition. Customer is responsible for the cost of return freight. Geiger Textiles will charge a 30% restocking fee on approved returns. Custom-dyed or custom-woven materials may not be returned.

LEATHER

Leather is sold by the square foot, with a 1 hide minimum order. Average hide size is 50-55 square feet. Pricing includes any overage, and the quantity invoiced will be the same as the quantity ordered. Color may vary from samples. Natural marks such as scars, cuts, and other natural imperfections, especially on non-pigmented surfaces, are inherent in leather and considered normal. Upon request, dye lot samples can be sent for customer approval. Leather footage is estimated on the basis of usable square footage of soft, supple (2.5 to 3.5 oz.) leather suitable for upholstery.

CUSTOM COLORS

Geiger Textiles offers custom colors in any of its standard weaves or leathers. Minimum order required; lead-times apply for color strike off and production. Customer is responsible for the cost of overage, approximately 10 to 15 percent, on the production run. Custom-dyed or custom woven materials may not be canceled or returned. Customs are sold in full bolt or full hide increments, once minimum quantity is met. Minimum quantity and bolt size vary according to the style.

Maintenance Guideline – S

MAINTENANCE CODE

S – Clean with Mild, Dry Cleaning Solvent

REGULAR MAINTENANCE

Vacuum regularly using the proper attachment to avoid pilling.

GENERAL RECOMMENDATIONS

Treat stains promptly. The longer a stain remains on the textile, the more difficult it will be to remove. A professional furniture cleaning service is recommended.

Always pre-test any cleaning method in an inconspicuous area.

Several light applications of a cleaning agent are less harmful than a single concentrated application. Repeat stain treatment several times if necessary.

Never use heat to clean textiles. Heat can set stains.

Do not use agents containing bleach. These agents may cause discoloration over time.

Do not oversaturate the textile or let water pool in seams.

STAIN TREATMENT

Soak up any excess moisture immediately.

For oil and water-based stains, use a clean, soft, white cloth, a natural sponge, or a nylon, soft-bristle brush with a water-free dry cleaning solvent. Brush the stain with light, quick strokes. Avoid a scrubbing motion and work from the edge of the stain toward the center.

For insoluble stains (e.g. chewing gum, candle wax, etc.), use a plastic bag filled with ice to rub the stain until the substance becomes brittle. Use a clean, dull, flat knife to gently remove the substance.

Rinse stain treatment thoroughly with a natural sponge moistened slightly with cool, clean water and completely remove all cleaning solution residue as left over residue can attract soil over time.

Extra care should be taken when cleaning dark colors to avoid creating light marks that can be caused by color transfer.

Avoid excess rubbing to prevent discoloration and damage to the face of the material.

Do not saturate the surface.

Allow the textile to dry thoroughly and vacuum before using.

The information above is a guide to help in the maintenance of Geiger Textiles. Geiger can neither guarantee, nor take responsibility for specific results.

Under no circumstances shall Geiger be liable for any incidental, consequential, or other damage resulting from negligence, misuse, mishandling, or exposure of any chemicals used in connection with maintenance. Information relating to chemicals/cleaning solvents, environmental use, and human exposure should be reviewed with appropriate suppliers.

All label instructions on their use and precautions should be followed.

Maintenance Guideline - W

MAINTENANCE CODE

W – Clean with Water-Based Cleanser

REGULAR MAINTENANCE

For upholstery products, vacuum regularly using the proper attachments to avoid pilling.

GENERAL RECOMMENDATIONS

Treat stains promptly. The longer a stain remains on the textile, the more difficult it will be to remove. A professional furniture cleaning service is recommended.

Always pre-test any cleaning method in an inconspicuous area.

Several light applications of a cleaning agent are less harmful than a single concentrated application. Repeat stain treatment several times if necessary.

Never use heat to clean textiles. Heat can set stains.

Do not use solvent-based cleaning agents such as lacquer thinners, nail polish remover, pine oil or cleaning agents containing bleach.

These agents may cause discoloration over time.

Do not oversaturate the textile or let water pool in seams.

The information above is a guide to help in the maintenance of Geiger Textiles. Geiger can neither guarantee, nor take responsibility for specific results.

STAIN TREATMENT

Soak up any excess moisture immediately.

For oil and water-based stains, use a clean, soft, white cloth, or a natural sponge, with lukewarm, soapy water. Brush the stain with light, quick strokes. Avoid a scrubbing motion and work from the edge of the stain toward the center.

For solid stains (e.g. mud) allow the stain to dry thoroughly and gently break up any hardened areas. Use a nylon, soft bristle brush to remove all loose particles.

For insoluble stains (e.g. chewing gum, candle wax, etc.), use a plastic bag filled with ice to rub the stain until the substance becomes brittle. Use a clean, dull, flat knife to gently remove the substance. If the stain persists, blot the area with a clean, soft, white cloth or natural sponge and lukewarm soapy water.

For ink stains and scuff marks on vinyl wallcovering, gently blot the stain with isopropyl (rubbing) alcohol. This treatment will lighten the stain but will not remove it completely.

Rinse stain treatment thoroughly with a natural sponge moistened slightly with cool, clean water and completely remove all cleaning solution residue as left over residue can attract soil over time.

Extra care should be taken when cleaning dark colors to avoid creating light marks that can be caused by color transfer.

Avoid excess rubbing to prevent discoloration and damage to the face of the material.

Do not saturate the surface.

Allow the textile to dry thoroughly and vacuum natural wallcovering textiles before using.

Under no circumstances shall Geiger be liable for any incidental, consequential, or other damage resulting from negligence, misuse, mishandling, or exposure of any chemicals used in connection with maintenance. Information relating to chemicals/cleaning solvents, environmental use, and human exposure should be reviewed with appropriate suppliers.

All label instructions on their use and precautions should be followed.

Maintenance Guideline – W, Bleach Cleanable

MAINTENANCE CODE

W – Clean with Water-Based Cleanser

Bleach Cleanable – Clean with 10:1 Water to Household Bleach

REGULAR MAINTENANCE

Vacuum regularly using the proper attachment to avoid pilling. For non-woven textiles, wipe regularly with damp, clean, soft, white cloth or natural sponge.

GENERAL RECOMMENDATIONS

Treat stains promptly. The longer a stain remains on the textile, the more difficult it will be to remove. A professional furniture cleaning service is recommended.

Always pre-test any cleaning method in an inconspicuous area.

Several light applications of a cleaning agent are less harmful than a single concentrated application. Repeat stain treatment several times if necessary.

Never use heat to clean textiles. Heat can set stains.

Do not use solvent-based cleaning agents such as lacquer thinners, nail polish remover, or pine oil. These agents may cause discoloration over time.

Do not oversaturate the textile or let water pool in seams.

STAIN TREATMENT

Soak up any excess moisture immediately.

For oil and water-based stains, use a clean, soft, white cloth, a natural sponge, or a nylon soft-bristle brush with lukewarm, soapy water. Brush the stain with light, quick strokes. Avoid a scrubbing motion and work from the edge of the stain toward the center.

The information above is a guide to help in the maintenance of Geiger Textiles. Geiger can neither guarantee, nor take responsibility for specific results.

For tougher oil-based stains, confirm the construction of your textile is bleach cleanable. If so, and additional stain treatment is needed, use a 10% solution of diluted household bleach. Thoroughly rinse with cool, clean water to remove any residue.

For ink stains on ink resistant non-woven textiles, a 91% solution of isopropyl alcohol may also be used. Thoroughly rinse with cool, clean water to remove any residue.

For solid stains (e.g. mud) allow the stain to dry thoroughly and gently break up any hardened areas. Use a nylon, soft bristle brush to remove all loose particles.

For insoluble stains (e.g. chewing gum, candle wax, etc.), use a plastic bag filled with ice to rub the stain until the substance becomes brittle. Use a clean, dull, flat knife to gently remove the substance. If the stain persists, blot the area with a clean, soft, white cloth or natural sponge and lukewarm soapy water.

For blood and bodily fluid stains, follow the oil-based stain treatment above. If the stain persists, gently dab a pH-neutral cleanser, upholstery spot cleaner, or an equal mixture of water and enzyme detergent (e.g. laundry detergent) on the stain and let it sit for one minute.

Rinse stain treatment thoroughly with a natural sponge moistened slightly with cool, clean water and completely remove all cleaning solution residue as left over residue can attract soil over time.

Extra care should be taken when cleaning dark colors of woven textiles to avoid creating light marks that can be caused by color transfer.

Avoid excess rubbing in order to prevent discoloration and damage to the face of the material. Do not saturate the surface.

For woven textiles, allow the textile to dry thoroughly and vacuum before using.

Under no circumstances shall Geiger be liable for any incidental, consequential, or other damage resulting from negligence, misuse, mishandling, or exposure of any chemicals used in connection with maintenance. Information relating to chemicals/cleaning solvents, environmental use, and human exposure should be reviewed with appropriate suppliers.

All label instructions on their use and precautions should be followed.

Maintenance Guideline - W/S

MAINTENANCE CODE

W/S – Clean with Water-Based Cleanser, or Mild, Dry Cleaning Solvent

REGULAR MAINTENANCE

Vacuum regularly using the proper attachment to avoid pilling.

GENERAL RECOMMENDATIONS

Treat stains promptly. The longer a stain remains on the textile, the more difficult it will be to remove. A professional furniture cleaning service is recommended.

Always pre-test any cleaning method in an inconspicuous area.

Several light applications of a cleaning agent are less harmful than a single concentrated application. Repeat stain treatment several times if necessary.

Never use heat to clean textiles. Heat can set stains.

Do not use agents containing bleach. These agents may cause discoloration over time.

Do not oversaturate the textile or let water pool in seams.

The information above is a guide to help in the maintenance of Geiger Textiles. Geiger can neither guarantee, nor take responsibility for specific results.

STAIN TREATMENT

Soak up any excess moisture immediately.

For water-based stains, use a clean, soft, white cloth, a natural sponge, or a nylon soft-bristle brush with lukewarm, soapy water. Brush the stain with light, quick strokes. Avoid a scrubbing motion and work from the edge of the stain toward the center.

For oil-based stains, use a clean, soft, white cloth, a natural sponge, or a nylon, soft-bristle brush with a water-free dry cleaning solvent. Brush the stain with light, quick strokes. Avoid a scrubbing motion. Work from the edge of the stain toward the center.

For insoluble stains (e.g. chewing gum, candle wax, etc.), use a plastic bag filled with ice to rub the stain until the substance becomes brittle. Use a clean, dull, flat knife to gently remove the substance. If the stain persists, blot the area with a clean, soft, white cloth or natural sponge and lukewarm soapy water.

If the stain persists, gently dab a pH-neutral cleanser, upholstery spot cleaner, or an equal mixture of water and enzyme detergent (e.g. laundry detergent) on the stain and let it sit for one minute.

Rinse stain treatment thoroughly with a natural sponge moistened slightly with cool, clean water and completely remove all cleaning solution residue as left over residue can attract soil over time.

Extra care should be taken when cleaning dark colors to avoid creating light marks that can be caused by color transfer.

Avoid excess rubbing to prevent discoloration and damage to the face of the material.

Do not saturate the surface.

Allow the textile to dry thoroughly and vacuum before using.

Under no circumstances shall Geiger be liable for any incidental, consequential, or other damage resulting from negligence, misuse, mishandling, or exposure of any chemicals used in connection with maintenance. Information relating to chemicals/cleaning solvents, environmental use, and human exposure should be reviewed with appropriate suppliers.

All label instructions on their use and precautions should be followed.

Maintenance Guideline - W/S, Bleach Cleanable

MAINTENANCE CODE

W/S – Clean with Water-Based Cleanser, or Mild, Dry Cleaning Solvent

Bleach Cleanable – Clean with 10:1 Water to Household Bleach

REGULAR MAINTENANCE

Vacuum regularly using the proper attachment to avoid pilling.

GENERAL RECOMMENDATIONS

Treat stains promptly. The longer a stain remains on the textile, the more difficult it will be to remove. A professional furniture cleaning service is recommended.

Always pre-test any cleaning method in an inconspicuous area.

Several light applications of a cleaning agent are less harmful than a single concentrated application. Repeat stain treatment several times if necessary.

Never use heat to clean textiles. Heat can set stains.

Do not oversaturate the textile or let water pool in seams.

STAIN TREATMENT

Soak up any excess moisture immediately.

For water-based stains, use a clean, soft, white cloth, a natural sponge, or a nylon soft-bristle brush with lukewarm, soapy water. Brush the stain with light, quick strokes. Avoid a scrubbing motion and work from the edge of the stain toward the center.

For oil-based stains, use a clean, soft, white cloth, a natural sponge, or a nylon, soft-bristle brush with a water-free dry cleaning solvent. Brush the stain with light, quick strokes. Avoid a scrubbing motion. Work from the edge of the stain toward the center.

For tougher oil-based stains, confirm the construction of your textile is bleach cleanable. If so, and additional stain treatment is needed, use a 10% solution of diluted household bleach. Thoroughly rinse with cool, clean water and completely remove all cleaning residue.

For insoluble stains (e.g. chewing gum, candle wax, etc.), use a plastic bag filled with ice to rub the stain until the substance becomes brittle. Use a clean, dull, flat knife to gently remove the substance. If the stain persists, blot the area with a clean, soft, white cloth or natural sponge and lukewarm soapy water.

If the stain persists, gently dab a pH-neutral cleanser, upholstery spot cleaner, or an equal mixture of water and enzyme detergent (e.g. laundry detergent) on the stain and let it sit for one minute.

Rinse stain treatment thoroughly with a natural sponge moistened slightly with cool, clean water and completely remove all cleaning solution residue as left over residue can attract soil over time.

Extra care should be taken when cleaning dark colors to avoid creating light marks that can be caused by color transfer.

Avoid excess rubbing to prevent discoloration and damage to the face of the material.

Do not saturate the surface.

Allow the textile to dry thoroughly and vacuum before using.

The information above is a guide to help in the maintenance of Geiger Textiles. Geiger can neither guarantee, nor take responsibility for specific results.

Under no circumstances shall Geiger be liable for any incidental, consequential, or other damage resulting from negligence, misuse, mishandling, or exposure of any chemicals used in connection with maintenance. Information relating to chemicals/cleaning solvents, environmental use, and human exposure should be reviewed with appropriate suppliers.

All label instructions on their use and precautions should be followed.

Leather Maintenance

To maintain the quality of your Geiger leather, please follow the cleaning procedures outlined.

The instructions for the care and maintenance of Geiger products are provided to you as a service. No warranty is implied since results may vary.

NORMAL CLEANING

Vacuum or dust frequently with a clean, dry cloth.

If leather is soiled, it can be wiped with a soft, damp cloth using a lather of any mild soap with lukewarm water.

Do not spot clean leather; clean the entire surface.

Wipe clean with a damp cloth and dry with a clean, soft cloth.

SPOTS AND SPILLS

Wipe excess liquid immediately with a clean cloth or sponge; let the leather air dry.

If further cleaning is necessary, sponge the entire surface—seat, back, or chair arm—with lukewarm water.

Let the leather air dry; never use a hair dryer or other heat source to dry leather.

STUBBORN SPOTS AND STAINS

Apply a mild, nonabrasive soap solution with a clean, wet sponge.

Rinse well and let air dry.

BUTTER, OIL, OR GREASE

Wipe the leather with a clean, dry cloth and let the remainder of the oil dissipate into the leather.

Do not apply water or try to wash a grease spot.

Do not use saddle soap, cleaning solvents, oils, furniture polishes, varnishes, abrasive cleaners, detergents, or ammonia on leather; they will ruin the finish, causing it to become sticky and cracked.

If the stain remains, contact a professional cleaner.

LARGE AREAS

If large areas are soiled, contact a professional cleaning firm.

The information above is a guide to help in the maintenance of Geiger Textiles. Geiger can neither guarantee, nor take responsibility for specific results.

Under no circumstances shall Geiger be liable for any incidental, consequential, or other damage resulting from negligence, misuse, mishandling, or exposure of any chemicals used in connection with maintenance. Information relating to chemicals/cleaning solvents, environmental use, and human exposure should be reviewed with appropriate suppliers.

All label instructions on their use and precautions should be followed.

Healthcare Recommendations All Cleaning Codes

HEALTHCARE RECOMMENDATIONS

Healthcare facilities should follow safety protocols for biological hazards and/or anti-viral treatments during the cleaning process.

Always pre-test in an inconspicuous area before cleaning. After cleaning, rinse repeatedly with cool, clean water to ensure complete removal of all cleaning solution residue. Left over residue can discolor over time.

For a complete list of approved hospital grade cleansers, contact your sales representative.